



WHAT DRIVES YOU

feltbicycles

INSIDE FELT

(our history)

At Felt, our mission remains as it's been since the beginning: to design, develop, and deliver the best bicycles in the world. Period.

The roots of this mission trace back more than two decades. It all started in the late 1980s when motocross star Johnny O'Mara asked his ace motorcycle mechanic Jim Felt to build him a time trial bike. Johnny was competing in triathlons as training for motocross.

A competitive age-group triathlete himself, Jim had a distinct vision of how he could improve on the designs of the time. He focused on optimizing rider position to maximize aerodynamic efficiency. It worked. Johnny immediately started winning races, and before long Jim was building bikes for many of the world's top triathletes. When Paula Newby-Fraser won the 1991 Kona Ironman on a Felt, Jim found himself officially in the bicycle business.

Ten years after Jim Felt built that first triathlon bike, it was time to expand. Enter Bill Duehring and Michael Mullmann. Bill, a bike industry veteran, brought years of product development experience and strong global supplier ties. Michael owned a successful distribution company in Europe.

It was the perfect melding of skills. Felt now had more than 70 years of combined experience in developing, manufacturing, and distributing high-quality bicycles. Jim brought his respected name, design experience, and athlete relationships. Bill had broad-based product development knowledge and vendor connections. Michael had extensive experience in distribution and marketing.

"We didn't want to be the biggest bike company in the world, just the best" was the trio's shared maxim. Together Jim, Bill, and Michael developed a singular goal: to build a bicycle brand dedicated to technological innovation and unmatched quality.

Since those fledgling days, the Felt brand has grown far beyond its triathlon roots, and today includes a complete bike line that touches all of cycling's various disciplines. Whether climbing the highest peaks of the Tour de France, bombing down single-track, racing your first triathlon, or commuting to work, Felt delivers a bike with uncompromised performance, maximum comfort, and optimized efficiency.

In engineering, product development, sales, marketing, and customer service, the same underlying values that sparked the start of the company continue to drive every Felt employee, every day. Indeed, every Felt bike is designed and built to make your cycling experience the absolute best it can be.

No matter how you measure success, be it product development, milestones, or race wins, Felt has delivered. From innovative manufacturing processes such as InsideOut and Dynamic Monocoque Construction, to breakthrough technologies such as Equilink suspension and the Bayonet Steering System, Felt is constantly expanding the boundaries of possibility and making them a reality.

The core to this success is a company-wide mandate to continually improve on past success. Nothing is done in a vacuum. Instead, each new Felt bike, be it road or off-road, high-end performance to

entry-level recreation, utilizes critical lessons from past designs, and then incorporates new enhancements.

The results speak for themselves. The world's fastest UCI legal time trial bike, the DA, continues to dominate the international time trial and triathlon circuit. The Edict full-suspension mountain bike is a stalwart on the world's elite cross-country scene. The top-tier AR and F road bikes are mainstays of the European peloton. And, the TK1 has been raced on the track at two Olympic Games, Beijing in 2008 and now London 2012.

Felt has also made a dramatic incursion into cyclo-cross with its top-end FX series, a World Cup worthy carbon fiber platform that helped American star Ryan Trebon continue his dominating ways in 2011. Felt also launched the new Edict Nine, a 29-inch wheeled mountain bike racing machine that provides the ideal balance between weight, strength, stiffness, ride quality, and durability. And of course we remain exceptionally proud of our Verza line. These bikes are so popular that after just one year, they had to be expanded into Verza City and Verza Path series just to keep up with interest and demand.

On the competition front, Felt is a dominant player. Recent highlights include the Project London track team shattering the U.S. team sprint record, Argos-Shimano ace sprinter Marcel Kittel's conquest of Belgium's testing Scheldeprijs race, and Kristin Armstrong's time trial victory at the Tour of California. Other notable Felt driven efforts include triathlon star Andi Böcherer's victory at the Ironman 70.3 European championships, and of course, Thomas Litscher's U23 UCI Mountain Bike World Championship.

Competition is only part of the Felt story. Our Café cruiser series continues to offer a contemporary and stylish solution for anyone looking to make cycling part of a healthy and environmentally responsible lifestyle. And the Verza City and Verza Path lines further demonstrate that Felt is helping change the way people think about bikes and transportation in general.

With an exciting array of bikes for all types of riders and disciplines, plus a host of new technologies, 2013 promises to be another exceptional year.

Don't expect Felt's mission to change. Just as it was when Jim Felt started the company all those years ago, we continue to design, develop, and deliver the best bicycles in the world. Period.



ARSERIES

Blending the lightweight, stiff, and quick-handling performance of a professional-grade carbon fiber road racing bike with the aerodynamic advantages of a time trial bike, the AR has redefined the road bike category.

Four years ago, pro racers challenged Felt to put its aerodynamic expertise toward designing a new road bike. The racers asked Felt, makers of the world's fastest time trial and track bikes (the DA and the TK1), to help them improve the efficiency and performance of the road bikes they ride day in and day out.

A collaborative development effort between Felt engineers and athletes, the AR was officially unveiled at the 2008 Tour de France. The competition immediately took notice. The pros know that at the speeds they race, aerodynamic efficiency matters. It can be the difference between winning and losing.

Following cues from the DA time trial bike, the AR is designed with a purpose-built down tube, head tube, chainstays, seatstays, fork blades, and a wheelwell-conforming seat tube. It also features internal cable routing found in the DA to maximize its aerodynamic advantage.

The result of this design is clear. Against its true adversary—the wind—the AR gives racers a tangible advantage. Testing sessions at the San Diego Low Speed Wind Tunnel facility have proven that, depending on speed and wind conditions, a rider can reasonably expect to save from 60-70 (+/-) seconds over the course of an hour when compared to a bike with round frame tubes in similar conditions.

The AR is the bike a great number of Felt's pro riders use any time they put a nose in the wind. It's the perfect machine for making a successful breakaway, or bringing one back.

Like all Felt road bikes, the AR is characterized by crisp handling. The proprietary blend of carbon fiber materials used to construct the frame give it the stiffness and ride quality for which Felt is known.

Beyond the frame, each AR is outfitted with a full complement of race-ready parts. From aerodynamic wheels to flawless drivetrains and gearing that's suited to racing speeds, the AR Series is designed and built to deliver you to your best performance ever.



AR1

matte carbon

Aero UHC Ultimate + Nano MMC carbon frame and fork

Shimano Dura Ace Di2 11sp - 53/39 x 11-25T

Shimano Dura-Ace Super SLR brakes

Shimano C35 CP wheels

3T handlebars and stem



AR2

Aero UHC Advanced MMC carbon frame and fork
 Shimano Ultegra Di2 10sp - 53/39 x 11-25T
 Shimano Ultegra Super SLR brakes
 Fulcrum Racing Quattro wheels
 3T handlebars and stem



matte carbon

AR3

Aero UHC Advanced MMC carbon frame and fork
 Shimano Ultegra 10sp - 52/36 x 11-25T
 Shimano Ultegra Super SLR brakes
 Shimano RS30 wheels
 3T Handlebar



gloss DuPont white

AR4

Aero UHC Advanced MMC carbon frame
 SRAM Apex Doubletap 10sp-52/36 x 11-28T
 SRAM Rival Rear Derailleur and SRAM RED chainrings
 Prologo Zero T2.0 saddle
 Felt Aero R3 wheels



matte carbon

F SERIES

From the Tour de France to a domestic criterium, mountain top finishes to mass sprints, Felt's F Series bikes are all about winning. Whether it's the F1 raced in WorldTour events by Team Argos-Shimano or a quick, agile aluminum model, The F Series promises unbridled speed and world-class performance.

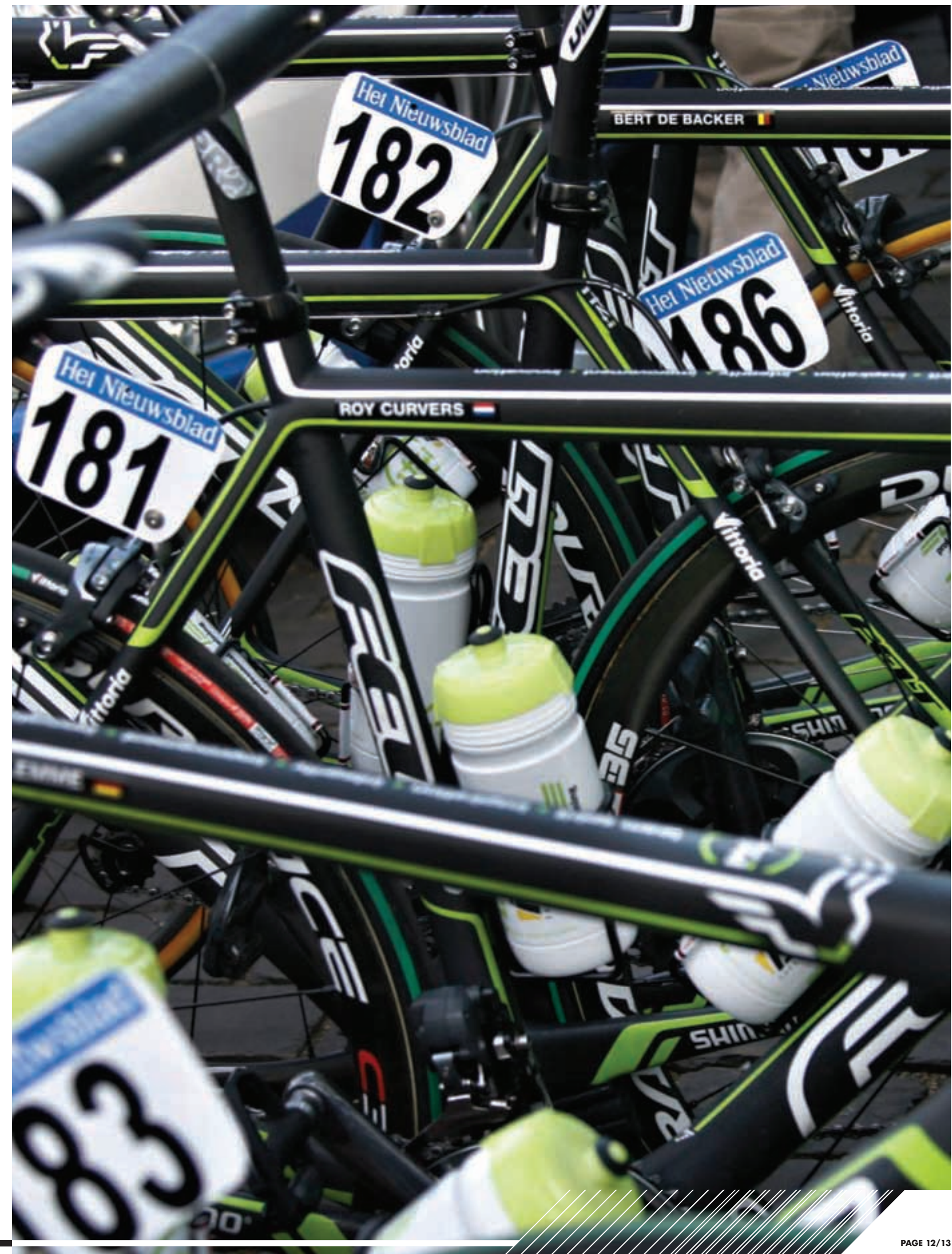
With the F Series, Felt blends no-nonsense racing geometry and the world's most advanced materials for a full line of crisp-handling bikes made to rip through corners, fly up climbs and accelerate in an instant. The top tube, shorter head tube, sharp trail and tight wheelbase—all aimed at producing full-performance body positioning on the bike—make it the ideal choice to meet your competitive goals.

The top-of-the-line F1 incorporates Felt's cutting-edge InsideOut molding process and UHC+Nano carbon fiber to minimize weight, while a BB30 bottom bracket and a ControlTaper head tube deliver unmatched power transmission and stiffness. Literally every strand of carbon fiber is engineered to deliver optimal performance and a refined ride. That same attention to detail continues throughout the line with every F model benefitting from the development of the top professional race bikes.

One of the hallmarks of the F series is consistent handling and stiffness throughout the line. Whether you're riding the F1 or the F85, the largest frame or the smallest, frame stiffness and handling feel quite similar. So every F Series rider, no matter their budget, can enjoy the same responsiveness in and out of the saddle, sprinting, climbing or cornering.

Each F Series bike comes equipped with components designed to optimize that particular model. Felt's product development team pours over the details to build an entire line at every price level. Each component has been chosen to provide the best possible combination of performance and value.

Get more acquainted with the podium this year. Get an F Series bike.



F1

matte carbon

UHC Ultimate + Nano DMC Carbon Fiber frame and fork

Shimano Dura Ace Di2 11sp w/sprint shifters 53/39 x 11-25T

Shimano Dura-Ace Super SLR brakes

Shimano Dura Ace C24 wheels

3T seatpost, handlebars and stem



F2

UHC Advanced MMC carbon frame and fork
SRAM Red Doubletap 10sp - 53/39 x 11/26
SRAM RED AeroLink brakes w/ Swiss Stop pads
Zipp 30mm alloy wheels
3T seatpost, handlebar and stem

matte carbon



F3

UHC Performance MMC carbon frame and fork
Shimano Ultegra Di2 10sp - 53/39 x 11-25T
Shimano Ultegra Super SLR brakes
Shimano RS61 wheels
3T Ergosum handlebar, Prologo saddle

matte carbon



F4

UHC Performance MMC carbon frame and fork
Shimano Ultegra 10sp - 52/36 x 11-25T
Shimano Super SLR brakes
Shimano RS10 wheels
Prologo saddle

gloss white



F5

UHC Performance MMC carbon frame and fork
 SRAM Apex/Rival drivetrain 10 sp 50/34 x 11-28T
 SRAM Rival rear derailleur
 SRAM Apex dual pivot w/cartridge brake pads
 Mavic CXP22 rims



matte carbon

F4130

Columbus Custom Butted Premium Cr-Mo frame
 UHC Performance carbon fork
 Campagnolo Athena 11sp Ergopower 50/34 x 12-27T
 Campagnolo Ultra-Torque BB30 Crankset
 Campagnolo dual pivot brakes



bella d' avoria

F75

Superlight Custom Butted 7005 aluminum frame
 UHC Performance carbon fork
 Shimano 105 10sp - 50/34 x 11-28T
 Felt UHC Performance Carbon Fiber seatpost
 Mavic CXP22 rims



matte black

F95 jr

Custom Butted 6061 aluminum frame with carbon fork
 Custom short reach brake/shift levers
 Shimano Sora derailleur 9sp 50/34 x 12-25T
 Custom 160mm length crankset



monster green

F85

Superlight Custom Butted 7005 aluminum frame
 UHC Performance carbon fork
 Shimano Tiagra 10sp - 50/34 x 11-28T
 Felt UHC Performance Carbon Fiber seatpost
 Mavic CXP22 rims



gloss white

F24

Custom Butted 7075 aluminum frame with carbon Fork
 Custom short reach brake/shift levers
 Shimano 2300 derailleur 8sp 50/36 x 12-25T
 Custom kids specific saddle, handlebar, stem
 Custom 155mm length crankset



monster green

ZSERIES

Whether you're racing a Gran Fondo or the Tour de France, the perfect bicycle is one that delivers lightning quick performance at any speed, and at the same time provides the compliance and fit necessary to make even the longest ride enjoyable. Enter the new 2013 Z Series. Building on an already successful heritage, the new Z bikes are specifically designed to meld top-tier performance and the ability to be ridden all day into one single purebred road bike.

Take a look at some of the bikes used by pros on long, grueling races and you'll notice they are a bit different than many traditional race bikes. They are built to be stable on fast descents and feature a slightly more upright rider position. They have longer wheelbases and offer excellent vibration damping—proven ways to reduce fatigue. These ride characteristics are central to the design goals of the Z.

Z Series frames use a slightly taller head tube for more flexibility in handlebar and rider positioning. They feature a sloping top tube for increased stand-over clearance, and they benefit from improved vertical compliance due to an enhanced frame cockpit layout. The Z also features a slightly longer wheelbase for confident handling at any speed.

For 2013, Felt has updated the venerable Z Series with an all new frame design that improves performance and handling. Engineers used computer analysis and real world data to revamp the Z from top to bottom. Improved tube shapes, more efficient carbon layups, and optimized tube intersections result in a Z that is 25% stiffer, 50g lighter, and even smoother than previous models.

Whether you choose a Z model built from super-premium UHC Ultimate+Nano carbon fiber and cutting-edge electronic Shimano Di2 shifting, or one of the lightweight aluminum/carbon fiber models, you'll get the same assured handling and race-worthy stiffness. It's a ride that's as responsive as it is confidence-inspiring.

All Z Series bikes are built with the right components for the ideal fit, plus gearing for any terrain and unmatched reliability. If ever there was a bike to inspire you to reach new heights, the Z is it.

matte carbon

**Z1**

UHC Ultimate + Nano MMC carbon frame and fork
Shimano Dura Ace Di2 11sp w/climbing shifters
50/34 x 11-28T

Shimano Dura-Ace Super SLR brakes
Mavic Ksyrium SLR WTS wheels
3T Seatpost, Handlebars and Stem

Z2

UHC Advanced MMC carbon frame and fork
Shimano Ultegra Di2 10sp w/climbing shifters
50/34 x 12-28T
Shimano Ultegra Super SLR brakes
Shimano RS20 wheels



matte carbon

Z3

UHC Performance MMC carbon frame and fork
Shimano Ultegra 10sp – 50/34 x 12-30T
Shimano Super SLR brakes
Shimano RS10 wheels
Prologo Saddle



gloss carbon

Z4

UHC Performance MMC carbon frame and fork
 Shimano 105 10sp - 50/34 x 12-30T
 Prologo Kappa EVO saddle
 Mavic CXP22 rims
 UHC Performance carbon seatpost



gloss carbon

Z85

Superlight Custom Butted 6061 aluminum frame w/BB30
 UHC Performance carbon fork
 Shimano 105 10sp - 50/34 x 12-32T
 Felt D2 Gel saddle
 Mavic CXP22 rims



matte black

Z95

Superlight Custom Butted 6061 aluminum frame
 UHC Performance carbon fork
 Shimano Sora 9sp - 50/34 x 11-32T
 Felt D2 Gel saddle
 Alex R500 rims



gloss white

Z5

UHC Performance MMC carbon frame and fork
 Shimano Tiagra 10sp - 50/34 x 12-32T
 Prologo Kappa EVO saddle
 Mavic CXP22 rims
 UHC Performance carbon seatpost
 Prologo Saddle



gloss carbon

Z100

Superlight Custom Butted 6061 aluminum frame
 UHC Performance carbon fork
 Shimano Sora rear derailleur 8sp
 50/34 x 11-32T
 Felt D2 Gel saddle
 Alex R500 rims



ultramarine blue

ZW SERIES

The goal of Felt's ZW Series is to honestly address the unique needs of women cyclists from both an engineering standpoint and an athlete's perspective. Many manufacturers introduce women's bikes by simply switching some parts, such as saddles and handlebars, and changing the frame graphics to set them apart from men's models. But Felt started the entire design and engineering process from scratch.

Redesigned for 2013, the ZW is faster than ever before. Engineers meticulously analyzed the frame, looking for ways to improve performance and ride quality. The result is a frame that is 25% stiffer and 50g lighter than the previous generation ZW all without compromising its distinct ride characteristics.

The ZW takes many of its design cues from the Z Series. Both feature a longer wheelbase for an extremely confident, assured ride quality. Both offer more handlebar positioning choices, a sloping top tube for superior stand-over clearance and improved vertical compliance that results from a more exposed seatpost.

Those design features contribute to the ZW's overall ride quality, but to really optimize the bike for women, and to address every anatomical detail, every angle

and dimension of the frame was scrutinized. Because a woman's body has distinctly different proportions than a man's, simply making a smaller frame is not an effective solution. Essentially, Felt reverse-engineered the geometry to achieve the desired fit.

Constructed from the same materials as the Z Series bikes, the ZW lay-up is customized to improve performance for women. The top-of-the-line ZW model uses Felt's unparalleled UHC Ultimate+Nano carbon fiber, and in all ZW bikes the materials are carefully optimized for women's needs. For example, they all feature smaller diameter tubes, thinner tube walls and shorter tube intersections.

As with everything that Felt designs, the ZW is focused on performance. The ZW has been ridden to an Olympic Gold medal by Emma Snowsill and the Felt Pro women's team Exergy TWENTY12 have ridden the ZW to multiple victories in some of the most prestigious races in the world. The ZW is stiff enough for unmatched efficiency, light enough to keep the pros flying over hills, and designed with size-appropriate vertical compliance.

So what does it all mean? It means that finally there is a bike you can call your own.



ZW2

Fit Woman UHC Performance MMC
carbon frame

Fit Woman UHC Advanced carbon fork
Shimano Ultegra Di2 10sp w/climbing shifters
50/34 x 11-28T

Shimano Ultegra Super SLR brakes
Fulcrum Racing 5 wheels

matte carbon/gloss
DuPont neon purple



ZW3

Fit Woman UHC Performance MMC
carbon frame and fork

Shimano Ultegra 10sp - 50/34 x 12-30T

Shimano Super SLR brakes

Fulcrum Racing 7 Wheels

Fit Woman components: handlebar, stem, saddle

Prologo Kappa DEA saddle

pearl white



ZW4

Fit Woman UHC Performance MMC carbon frame and fork
Shimano 105 10sp - 50/34 x 12-30T
Prologo Kappa EVO DEA saddle
Mavic CXP22 rims



gloss poppy

ZW75

Fit Woman Superlight Custom Butted 6061 aluminum frame
UHC Performance carbon fork
SRAM Apex Doubletap 10 sp - 50/34 x 12-32T
Prologo Kappa DEA saddle



pearl white

ZW95

Fit Woman Superlight Custom Butted 6061 aluminum frame
UHC Performance carbon fork
Shimano Tiagra 10sp 50/34 x 12-32T
Felt Fit Woman D2 Gel saddle



gloss black

ZW5

Fit Woman UHC Performance MMC carbon frame and fork
Shimano Tiagra 10sp - 50/34 x 12-32T
Prologo Kappa EVO DEA saddle
Alex R500 rims



gloss carbon

ZW100

Fit Woman Superlight Custom Butted 6061 aluminum frame
UHC Performance carbon fork
Shimano Sora rear derailleur 8sp 50/34 x 11-32T
Felt Fit Woman D2 Gel saddle



gloss heather grey

TT/TRISERIES

Felt built its name by creating innovative, aerodynamic bikes to race against the clock. For more than 20 years, we have continually brought new ideas to rider positioning, efficiency and, above all, aerodynamic performance. From World Champion triathletes Mirinda Carfrae, and Terenzo Bozzone, Olympic and World Time Trial Champion Kristin Armstrong, to the pros of Argos-Shimano, when it comes to solo efforts, winners rely on Felt.

The bikes you see in our 2013 TT/Tri Series have undergone years of development refinement and have already been proven—in the wind tunnel and in competition—to be our fastest yet.

It starts with the DA, Felt's premier TT/Tri bike. Incorporating radically shaped frame tubing, UHC Ultimate+Nano carbon fiber, and a host of new technologies including the Bayonet 3 Steering System and proprietary, aerodynamic brakes, the latest generation of the DA has already tallied several major international victories.

The DA's design process was time-consuming and expensive, but the results speak for themselves. After extensive internal brainstorming, detailed rider feedback, and studies in airflow and tube shapes, the engineering team used powerful Computational Fluid Dynamics (CFD) software to test their designs in a virtual environment. CFD, commonly used in the design of F1 racecars and multi-million dollar yachts, allows Felt to dial in our designs before creating physical prototypes.

By the time the DA prototypes were built, Felt engineers already understood what frame shapes worked best; but the development phase is never complete until the bike is analyzed in the wind tunnel. Over a period of more than a year, adjustments were made, new prototypes built—until they got it absolutely perfect.

But the real strength of Felt's TT/Tri Series is its depth. For 2013, the DA will be available in five different configurations including a new women's specific model. The B Series bikes, which are continuously recognized by cycling magazine editors for their blend of incredible performance and value, have been updated to improve performance across all pricepoints. Both the B2 and B12 frames are descendants of the DA frames, with nearly identical shaping. Engineers tweaked the front end to accommodate the standard fork, giving the headtube an aero and torsionally stiff hourglass shape. The result is a frame with ProTour caliber performance.

Every Felt TT/Tri bike is outfitted with a meticulously selected collection of components and parts. Each one, no matter its price, is built to offer the best aerodynamic performance and fit so that you can reach your goals. With Felt TT/Tri bikes, your best performance has never been more attainable.



DA1

matte carbon

UHC Ultimate + Nano MMC carbon frame and Bayonet 3 fork

Shimano Dura-Ace Di2 11sp w/dual location shifters
53/39 x 12-25T

Felt Integrated Aero brakes w/cartridge brake pads

Shimano RS21 wheels, Felt TTR1 Aero tires

Infinitely adjustable Bayonet 3 carbon handlebar

Felt Aero Bottle System by TorHans™



DA2

UHC Advanced MMC carbon frame and Bayonet 3 fork
 Shimano Ultegra Di2 10sp w/dual location shifters 53/39 x 11-25T
 Felt Integrated Aero brakes w/cartridge brake pads
 Felt TTR1 wheels by Reynolds, Felt TTR2 Aero tires
 Infinitely adjustable Bayonet 3 handlebar
 Felt Aero Bottle System by TorHans™



gloss white

DA3

UHC Advanced MMC carbon frame and Bayonet 3 fork
 SRAM RED 10sp w/SRAM Carbon TT shifters 52/36 x 11-26T
 Felt Integrated Aero brakes w/cartridge brake pads
 Felt TTR2 wheels, Felt TTR2 Aero tires
 Infinitely adjustable Bayonet 3 handlebar
 Felt Aero Bottle System by TorHans™



matte carbon

DA4

UHC Advanced MMC carbon frame and Bayonet 3 fork
 Shimano Ultegra w/Vision Metron 10sp shifters 52/38 x 11-25T
 Felt Integrated Aero brakes w/cartridge brake pads
 Felt TTR3 wheels, Felt TTR2 Aero tires
 Infinitely adjustable Bayonet 3 handlebar
 Felt Aero Bottle System by TorHans™



matte carbon

gloss ghost

**DA4 W**

Fit Woman UHC Advanced MMC carbon frame
 and Bayonet 3 fork
 Shimano Ultegra w/Vision Metron 10sp shifters
 50/34 x 11-25T
 Felt Integrated Aero brakes w/ cartridge brake pads
 Felt TTR3 wheels, Felt TTR2 Aero tires
 Infinitely adjustable Bayonet 3 handlebar
 Felt Aero Bottle System by TorHans™

B2

matte carbon

UHC Advanced MMC carbon frame and UHC Performance fork
Shimano Ultegra Di2 10sp w/dual location 52/38 x 11-25T
Prologo NAGO EVO TRI 40 T2.0 saddle
Felt TTR2 wheels, Felt TTR2 Aero tires
Infinitely adjustable Bayonet 3 handlebar
Felt Aero Bottle System by TorHans™



B12

UHC Performance MMC carbon frame and fork
 Shimano Ultegra w/Vision 10sp Metron Shifters
 52/38 x 11-25T
 Prologo NAGO EVO TRI 40 T2.0 saddle
 Felt TTR3 aerodynamic wheels
 Infinitely adjustable Bayonet 3 handlebar
 Felt Aero Bottle System by TorHans™

gloss white

**B16W**

Fit Woman UHC Performance MMC carbon frame and fork
 Shimano Ultegra w/Shimano 10sp shifters
 50/34 x 11-28T
 Prologo Women's Saddle
 Felt TTR4 aerodynamic wheels
 Felt highly adjustable Tri handlebar

matte carbon

**B16**

UHC Performance MMC carbon frame and UHC Performance fork
 Shimano Ultegra w/Shimano 10sp shifters
 52/36 x 11-28T
 Felt Tri waterproof saddle
 Felt TTR4 aerodynamic wheels
 Felt highly adjustable Tri handlebar

matte carbon

**S32**

Superlight Custom Butted 6061 aluminum frame
 UHC Performance carbon fork
 Shimano 105 w/Shimano 10sp shifters
 50/34 x 11-28T
 Felt TRI waterproof saddle
 Felt TTR4 aerodynamic wheels

white





TRACKSERIES

Whether it's sprint or endurance events, there's no room for error on the track, and developing bikes for World Champions like Sarah Hammer and elite track teams like Project London keeps Felt on the cutting edge of technology. In track racing, it's one bike, one gear—and the results don't lie.

Like the DA time trial/triathlon bike, the TK1 uses Felt's UHC Ultimate+Nano carbon fiber, unsurpassed for its ability to make lightweight, stiff, ride-tuned performance bikes. Just as with the DA, the TK1 was engineered using powerful, cutting-edge CFD software and extensive aerodynamic analysis. Once the materials were chosen, Felt engineers applied proven geometry to give the bike precise, track-specific handling characteristics.

For 2013, Felt has developed two distinct versions of the TK1—the TK1 Sprint and the TK1 Endurance. Both share the identical aerodynamic shapes and gains that have delivered Felt athletes to multiple national and world titles, and both were featured in the London 2012 Olympics. The only difference is that the Sprint is tailored for bigger, more explosive standing starts while the Endurance, at almost 300g lighter, is best suited for mass-start events. Both feature Felt's proprietary Bayonet Track fork/stem combination.

All of Felt's track bikes, including the TK2 and TK3, have developed a loyal following among track racers from beginner to pro. The TK2 and TK3 use the same aerodynamic know-how of the pro-level bikes and are engineered with lightweight, responsive aluminum frame tubing.

All Felt track bikes feature quality touches such as CNC-machined dropouts and internally-machined bottom bracket shells. While the TK1 is available only as a frameset, the TK2 and TK3 come as complete bikes with parts chosen to optimize their track-racing abilities.

Find out for yourself why Felt track bikes have developed such a hardcore following among such a wide variety of racers. Whether you're a World Champion or a Wednesday night champion, Felt offers the fastest way to get around the track.

TK1

Available in 2 frame models: Endurance and Sprint
UHC Ultimate + Nano MMC carbon frame
FSA integrated headset
TK1 Aero Seatpost w/3T DiffLock Topper for saddle
See our TK1 Frame offerings for complete details

matte carbon



TK2

Track specific custom butted superlight 7005 aluminum frame
UHC Performance carbon fork
SRAM Omnium track GXP crankset 48 x 15T
3T SPHINX LTD endurance aero handlebar
Felt Tkr-2 700c 40mm deep aero track wheels



matte black

TK3

Track specific custom butted superlight 7005 aluminum frame
UHC Performance carbon fork
Track cold forged aluminum crankset 48 x 15T
Felt Tkr 6061 aluminum w/track drop handlebar
Felt Tkr-4 30mm deep aero track wheels



tungster silver

TK4130

Track specific custom butted 4130 Tig welded Cr-Mo frame and fork
Felt TK Pista aluminum crankset , 24 (skip-tooth) x 15T
Felt TKR 6061 aluminum w/track drop handlebar
Felt TKR-3 700c 30mm deep aluminum aero track wheels



pale blue and chrome

CROSSSERIES

The unpredictable and constantly changing terrain in cyclocross puts a rider's skills to the test, and it's also the ultimate proving ground for a bike. The sport requires a lightweight, high-performance bike that can stand up to the elements and excel in a wide variety of punishing terrain. Enter the Felt FX Series.

The Felt-sponsored pros that depend on FX bikes demand a few things: The bikes have to handle confidently in dirt, sand, mud or snow. They have to be lightweight to zip up climbs, toss over a shoulder and carry through barrier sections. They have to always shift like new, stop instantly and accelerate like a rocket out of corners. Failure to do any one of these things is a compromise our racers can't accept.

For the FX Series, Felt implemented years of design experience, racer input, and cutting-edge technology to create a World Cup caliber cyclocross bike. The FX series benefits from the advanced engineering,

materials and manufacturing processes of Felt's latest-generation road bikes. Featuring full carbon fiber construction, the F1X blends Felt's newest road frame technologies with cyclocross geometry, additional mud clearance, arcing seatstays and a flattened top tube underside for more comfortable shouldering.

From the F1X to the singlespeed Breed, each Felt FX bike blends all the features of a serious cyclocross race bike with real-world versatility so that it's perfectly capable of doing a race one weekend and an epic dirt road ride the next. The FX series is game for any adventure where you might encounter pavement, dirt and who knows what else.

Whether you're shooting for a national championship or just dabbling in 'cross to improve your fitness—or even if you just need a fast, quick-handling and dependable bike for rides that might lead you off the pavement—there is an FX just for you.



F1X

matte carbon

UHC Advanced MMC Carbon Fiber Frame with 3T LUTEUS fork
SRAM RED DoubleTap 10sp shifters/derailleurs 46/36 x 11-26T
Avid BB7 'cross disc w/custom Ashima rotors
MAVIC Crossmax SLR wheels, tubeless compatible Vittoria tires
3T Handlebar, stem and seatpost
Custom WickWerks Yaw-type chainrings



F2X

UHC Performance MMC carbon frame and fork
Shimano Ultegra Di2 w/climbing shifters
10sp, 46/36 x 11-28T
Shimano CX70 w/cartridge brake pads
Shimano Ultegra tubeless wheels
Tubeless compatible Vittoria Cross XG
Pro TNT tires

matte carbon



F3X

UHC Performance MMC carbon frame and fork
SRAM Force DoubleTap shifters and derailleurs
10sp 46/36 x 11-26T
Avid BB7 'cross disc w/Ashima rotors
Tubeless compatible Vittoria Cross
XG Pro TNT tires

matte carbon



F4X

UHC Performance MMC carbon frame and fork
Shimano Ultegra 10sp 46/36 x 12-28T
Tektro Cantilever brakes w/cartridge pads
Felt CXR wheels
Vittoria Cross XG Pro TNT tires



matte carbon

F75X

Superlight Custom Butted 7005 aluminum frame
UHC Performance carbon fork
Shimano Ultegra rear derailleur, 10S shifters
46/36 x 12-28T
Tektro Cantilever Brake w/cartridge pads
Felt CXR3 wheels w/sealed bearing hubs



gloss charcoal

F65X

Superlight Custom Butted 7005 aluminum frame
UHC Performance carbon fork
SRAM Rival rear derailleur, Apex doubleTap
10sp 46/36 x 11-28T
Avid BB5 'cross disc w/Ashima rotors
Felt CXR disc wheels w/sealed bearing hubs



matte carbon

BREED

Superlight Custom Butted 7005 aluminum frame
UHC Performance carbon fork
SRAM S350 crankset w/rear cassette cog 36 X 16T
Avid Shorty4 Cantilever Brakes
Felt CXR single speed wheels



gloss blood red





EDICT NINESERIES

The goal was simple: Create the fastest full-suspension XC bike in the world. It took several years, much experimenting and many different prototypes to achieve this goal, but the Edict Nine has arrived for 2013.

Designed to burn up World Cup courses and tame the most rugged, grueling marathon XC courses, the all new Edict Nine Series brings a new level of refined Felt performance to the gritty, unpredictable world of off-road riding and racing. Incorporating Felt Active Stay Technology ("FAST") suspension and the efficiency and stability of 29" wheels, the carbon fiber Edict Nine is the next generation of XC racing.

To meet the lofty standards established for the Edict Nine, Felt adapted the proprietary FAST™ suspension system to the geometry of a 29" frame. FAST™ offers 100 millimeters (4") of smooth, predictable travel and delivers unequaled suspension performance in a lightweight, race-ready package. Of course, adapting FAST™ to different geometry is a task in itself. Engineers carefully tweaked geometry and tube shapes to ensure an ideal union between the suspension performance and the frame.

The genius behind FAST™ is its simplicity. By creating a frame and suspension system that work in unison to achieve specific goals—namely, unparalleled XC speed, control and efficiency—Felt engineers were able to pinpoint their efforts. FAST™ makes the most of Felt's considerable experience working with cutting-edge materials and construction techniques, and utilizes the design of the frame to optimize the bike's overall suspension performance.

The Edict Nine's seatstay and chainstay work together, offering just enough flex to optimize rear suspension activity. The whole rear end is custom shaped and engineered to provide both a stable pedaling platform and a smooth trail feel. It helps keep your tires on the ground when climbing or pedaling through smaller stutter bumps—situations where suspension affects traction—and adds just enough compliance to reduce fatigue.

The Edict Nine will be available in 5 offerings, ranging from the full carbon fiber Edict Nine LT to the alloy Edict Nine 60. All Edict models are light and quick-handling with a stable, neutral feel that inspires confidence on steep, technical climbs, screaming descents and whatever else the trail throws your way.

EDICT NINE LTD

gloss carbon

UHC Ultimate + Nano DMC carbon frame

Fox Float CTD BV, 100mm FAST Suspension

Fox 32 Float 29 CTD, Tapered, 15QR, 100mm
w/Kashima coat

Shimano XTR derailleurs, shifters, cranks, 38/24 x 11-36

Reynolds Carbon 29'er wheels w/XTR Hydraulic
disc brakes



EDICT NINE1

UHC Performance DMC carbon frame
Fox Float CTD BV, 100mm FAST Suspension
Fox 32 Float 29 CTD, Tapered, 15QR, 100mm
Shimano XT derailleurs, shifters, cranks, 38/24 x 11-36
WTB Stryker TCS wheel set w/XT hydraulic disc brakes



gloss white

EDICT NINE50

Double Butted 7005 aluminum frame
RockShox Monarch R, 100mm rear suspension
RockShox Recon Gold TK29, Tapered, 15mm Maxle, 100mm
Shimano Deore derailleurs, shifters, crank, 42/32/24 x 11-36
WTB rims w/Shimano Deore hydraulic disc brakes



matte black

EDICT NINE3

UHC Performance DMC carbon frame
RockShox Monarch R, 100mm FAST Suspension
RockShox Recon Gold TK29, Tapered, 15mm Maxle, 100mm
SRAM X9 rear derailleur, X7 shifters, 38/24 x 11-36
WTB rims w/Avid Elixir 3 hydraulic disc brakes



gloss red

EDICT NINE60

Double Butted 7005 aluminum frame
RockShox Monarch R, 100mm rear suspension
RockShox XC32 29 TK Solo Air, Tapered, 100mm
SRAM X5 derailleurs, shifters, 38/24 x 11-36
WTB rims, w/Tektro hydraulic disc brakes



gloss black

VIRTUE SERIES

Felt's Virtue Series is designed to combine the agility and performance of a cross-country bike with the stability and control of an aggressive trail bike. The Virtue offers riders a unique blend of versatility and performance unparalleled in the industry. Whether you are looking for an off-road race machine, or an all-purpose trail bike, the Virtue has it covered.

The 130mm travel Virtue is built around Felt's award-winning Equilink™ system, which offers as much pedaling efficiency uphill as it offers trail taming suspension downhill. This makes for a bike as equally adept at winning enduro races as it does tearing up your local trails. You'll benefit by beating your friends to the top and the bottom of any of your local trails.

Each Virtue is crafted to be as light and torsionally stiff as possible while also delivering a precise and confident feel. Engineers accomplished this by incorporating Felt's ControlTaper headtube and top-of-the-line materials to the Virtue platform. Additionally, the geometry gives a more stable and efficient ride.

The Virtue Series comes in two levels of framesets. The first utilizes in an alloy/carbon blend that features a hydroformed aluminum front triangle and carbon fiber rear, while the second is a full-carbon model, constructed with Felt's most advanced materials and processes. These including our Dynamic Monocoque Construction and InsideOut Internally Optimized Molding Process.

Each Virtue features custom-valved rear shocks to keep the suspension active. While many frame designs rely on platform damping to reduce unwanted suspension movement, Felt's Equilink™ allows the shock to do its job without the rider influencing suspension performance. This makes for a much livelier, faster, and overall more fun bike to ride.

Ride any trail with more speed, comfort and efficiency than you ever dreamed possible. Ride Virtue.



matte carbon



VIRTUE3

UHC Performance DMC carbon frame
RockShox Monarch R, 120/130mm Equilink adjustable travel
RockShox Sektor TK Solo Air, Tapered, 15mm Maxle, 130mm
SRAM X9 RBC rear derailleur, X7 shifters, 38/24 x 11-36
WTB rims w/Avid Elixir 3 Hydraulic disc brakes

VIRTUE1

UHC Performance DMC carbon frame
RockShox Monarch RT3, 120/130mm Equilink adjustable travel
RockShox Revelation RCT3 Solo Air, 15mm Maxle, 130mm
Shimano XT derailleurs, shifters, crank 38/24 x 11-36
Shimano XT Trail wheels w/hydraulic disc brakes



gloss carbon

VIRTUE50

7005 aluminum frame w/UHC Performance carbon stays
RockShox Monarch R, 120/130mm Equilink adjustable travel
RockShox Sektor TK Solo Air, Tapered, 15mm Maxle, 130mm
SRAM X9 RBC rear derailleur, 38/24 x 11-36
WTB rims w/Avid Elixir 1 hydraulic disc brakes



gloss white

A full-page background image showing a cyclist in a forest. The cyclist is wearing a bright yellow-green short-sleeved shirt, black shorts, and black gloves. They are riding a black mountain bike with red accents. The background is a dense forest with trees and foliage, creating a bokeh effect. The text is overlaid on the left side of the image.

COMPULSION SERIES

Equally capable of tackling a sanctioned gravity event or an all-day, all-mountain epic, the Compulsion is Felt's do-it-all trail machine. With patented Equilink™ suspension and 6" (Adjustable 150mm or 160mm) of fully active travel, the Compulsion is the pinnacle of all-mountain performance. Get up the hill faster and devour the most technical descents with greater ease.

The Compulsion series is all new for 2013, featuring a full carbon fiber frame that yields a bike that is lighter, stronger, and stiffer than ever before. The weight of every model was reduced for more agile performance on the trail, and the new models feature head angles that are now slacker (67.5 degrees) for improved handling in aggressive, technical terrain. In addition, the stiffness and strength of every Compulsion frame has been bolstered by the use of all-new links and hardware, revised pivot placement, and tweaked tube shapes. Cartridge bearings ensure smooth travel, and the pivot axles have been updated with a new custom thru-shaft for improved durability and strength.

So how did we make the Compulsion as capable on the climbs as it is the descents? Easy. Felt's patented Equilink™ suspension system completely equalizes all negative influences from pedaling and braking. This eliminates the need for a "clever" shock with lots of platform or compression damping to imitate true efficiency. By using Equilink™, the Compulsion produces such efficient and compliant pedaling that you will feel like you are riding a 3" travel bike. That is, until you crest the hill, start your descent and absorb that first big hit. And that is the Compulsion's secret: the pedaling efficiency of a true trail bike, combined with 6" of trail smashing travel.

COMPULSION LT3

UHC Performance carbon frame w/aluminum stays, 142 thru-axle

RockShox Monarch Plus RC3 150/160mm Equilink adjustable travel

RockShox Lyrik RC Solo Air, Tapered, 20mm Maxle

SRAM X9 RBC rear derailleur, X7 shifters/crank, 38/24 x 11-36

Avid Elixir 5 hydraulic disc brakes

WTB Speed Disc i23 rims



matte carbon shadow

COMPULSION LT1

UHC Performance carbon frame w/aluminum stays, 142 thru-axle

Fox Float CTD BV 150/160mm Equilink adjustable travel

Fox 34 Float 26 CTD Fit, 15 QR, 160mm w/Kashima coat

Shimano XT crank, shifters, derailleurs, 38/24 x 11-36

Shimano XT hydraulic disc brakes

Shimano XT Trail wheels



matte carbon

COMPULSION LT50

All Mountain 6061 aluminum frame, 142 thru-axle

RockShox Monarch R HV 150/160mm Equilink adjustable travel

RockShox Domain R, Tapered, 20mm Maxle

SRAM X7 rear derailleur, X5 shifters/crank, 38/24 x 11-36

Avid Elixir 1 hydraulic disc brakes

WTB Speed Disc i23 rims



matte black



NINESERIES

With cutting-edge frame technology and a superior ride quality that has won over many of Felt's professional cross-country racers, Felt's Nine Series bikes blend the surefooted handling characteristics of 29" wheels with the type of razor-sharp, race-bred performance that characterizes every bike that bears the Felt name.

Design criteria for the Nine has always been strict and focused, and for 2013, Felt updated just about everything on Nine platform. From the geometry, to tube shapes, to rear triangle design, the Nine emerges in 2013 faster and more efficient than ever before. In addition, the Nine is now offered in 5 sizes, giving an improved ride quality to cyclists of all sizes.

To maximize the Nine's performance on the trail, Felt engineers modified the head angle and added a fork that produces the same trail as a nimble 26" bike would. In addition, the Nine frames were constructed with same bottom bracket height as our 26" XC bikes—lower than most other 29" wheel bikes to give it a low center of gravity and put the rider more in tune with the terrain.

The larger wheels did pose some formidable design challenges to Felt engineers. Chainstays on 29" wheel bikes frequently run long to accommodate the tire and front derailleur. But thanks to a curved seat tube

and forged chainstay yoke on the aluminum frames, Felt engineers were able to keep the chainstays short without interfering with the front derailleur. This keeps rider weight properly distributed. Better front-to-rear weight distribution improves the bike's abilities on out-of-the-saddle climbs.

The combination of all these features makes the Nine feel more like a traditional hardtail mountain bike, only faster. The result of all this engineering is a bike that inspires confidence with its tried-and-true handling.

Top Nine models feature Felt's proprietary Modular Monocoque carbon fiber construction for improved ride quality, drivetrain efficiency, torsional rigidity and tire clearance. Naturally, a carbon fiber frame means the bike is lighter and offers a more comfortable ride as a result of carbon fiber's natural damping ability.

Our World Cup mountain bike racers will tell you: The Nine is an endurance racer's dream. With its light weight and ability to float over rocks, it blends a smooth riding experience with incredible responsiveness. Its 29" wheels make longer off-road efforts more sustainable.

Whether you are a seasoned marathon racer, XC racer, weekend warrior, or recreational rider, there's a Nine that's tailor-made for you.

NINE 1

matte carbon

UHC Advanced carbon frame withn Inside Out technology

Fox 32 Float 29 CTD FIT, Tapered, 15QR, 100mm

Shimano XT derailleurs, shifters, crank, 38/24 x 11-36

Shimano XT hydraulic disc brakes

WTB Stryker TCS wheels



NINE3

UHC Performance carbon frame with Inside Out technology

RockShox Recon Gold TK Solo Air, Tapered, 15mm Maxle, 100mm

SRAM X9 rear derailleur, X7 shifters, 38/24 x 11-36

Avid Elixir 3 hydraulic disc brakes

WTB Speed Disc i23 rims

matte carbon



NINE20

Double Butted 6061 Hydroformed aluminum frame

RockShox Reba RL 1.5, Tapered, 15mm Maxle, 100mm

Shimano XT derailleurs, shifters, crank, 38/24 x 11-36

Avid Elixir 5 hydraulic disc brakes

WTB Speed Disc i23 rims

race red



NINE50

Double Butted 6061 Hydroformed aluminum frame
RockShox Recon Gold TK 29 Solo Air, Tapered, 100mm
Shimano Deore derailleurs, shifters, crank,
42/32/24 x 11-36
Avid Elixir 1 hydraulic disc brakes
WTB SX-17 rims

pearl white



NINE70

Butted 6061 Dynaformed aluminum frame
SR Suntour SF13-XCT-MLO-29, 100mm
Shimano 27 speed Rapidfire Shifters
Shimano Alivio rear derailleur, 42/32/24 x 11-32
Tektro Novella mechanical disc brakes

pearl blue



NINE60

Double Butted 6061 Hydroformed aluminum frame
RockShox XC30 29 TK, Tapered, 100mm
Shimano 27 speed Rapidfire Shifters
Shimano Deore rear derailleur, 42/32/22 x 11-34
Tektro Draco hydraulic disc brakes

hibachi



NINE80

Butted 6061 Dynaformed aluminum frame
SR Suntour SF13-XCT-29, 100mm
SRAM 24 speed X4 trigger shifters
SRAM X4 rear derailleur, 42/32/24 x 11-32
Tektro Novella mechanical disc brakes

matte gun metal



SIX & QSERIES

Felt's Six Series mountain bikes combine real-world performance with affordability. The Six is designed to be a truly capable off-road machine. Whether you ride through challenging urban terrain, rugged mountain trails or dirt roads far from town, the Six is your ticket to explore.

Using tried-and-true geometry, Six Series bikes feature superb handling in a wide variety of terrain. Perfect for dirt bike paths, more challenging singletrack, or even an off-road race, the comfortable riding position and neutral geometry help any off-road rider hone their skills and enjoy the ride.

All Six series frames use premium 6061 aluminum tubing with specially manipulated shapes designed for maximum torsional stiffness and vertical compliance. Felt uses a modern dynaforming construction process to shape the tubes for minimal weight and bold styling.

Versatile frame features such as rack and fender mount braze-ons, plus sturdy 3D cold-forged dropouts, are included on every Six Series bike. And each comes equipped with disc brakes for powerful stopping control in all conditions. Every Six features wide-range gearing with flawless shifting, and suspension forks that perform like those on bikes costing considerably more.

Adventure is how you define it. Six Series bikes allow you to push your off-road explorations further.



sharkskin

SIX70

Butted 6061 Dynaformed aluminum frame
SR Suntour SF13-XCT-MLO, 100mm
Shimano 24 speed Rapidfire Shifters
Shimano Alivio rear derailleur, 42/32/24 x 11-32
WTB rims w/ Tektro Novella mechanical disc brakes



SIX80

Butted 6061 Dynaformed aluminum frame
SR Suntour SF13-XCT-MLO, 100mm
SRAM 24 speed X4 trigger shifters
SRAM X4 rear derailleur, 42/32/24 x 11-32
Tektro Novella mechanical disc brakes



hibachi

Q24

6061 Dynaformed aluminum frame
24" suspension fork, 50mm
Shimano 21 speed Revo Shifters
Shimano Altus rear derailleur,
42/34/24 x 13-34
Felt kids MTB design saddle



monster green



FRAMESETS

While a complete bicycle is the sum of literally hundreds of parts, its heart and soul is its frameset. It is the equipment version of the sun – everything else revolves around it. It is also the most personal component of any complete bike. It dictates ride quality while at the same time mirrors its owners taste in color, design and brand essence.

Last year we introduced our very successful Custom Frame Program, which included the ability to customize paint and graphics on our F1 frameset, and in 2013 we have expanded the program to include our FC frameset. Customers can select one of two custom paint options on the Custom Paint website and then construct their own paint schemes online. With so many options and color choices, there are literally hundreds of paint combinations to choose from, and with the addition of the FC frame as an option, price is no longer an obstacle.

The Advanced Option allows customers to select the paint finish, frame color, and decal color for the F1 Frameset. The frames can be coated in a stealthy matte finish or a traditional glossy finish. In addition

to raw carbon, there are thirteen high quality DuPont Paints available for both the frame color and decal color, giving customers a broad pallet of color choices.

The Ultimate+ Option offers even more customization abilities, allowing customers to select the paint finish, paint mask color, decal color, and custom text for the F1 and FC framesets. This expanded custom paint option allows customers to choose a matte or glossy finish and incorporate up to three colors into the paint scheme. Additionally, there will even be two different graphics packages. A custom text panel is also included in the Ultimate+ Option, and can be written in three different fonts.

Once the customer creates their ideal paint scheme, they then place an order online. When the order is placed, the customer selects a Felt dealer from which they will pick up the frame. The frame will be painted and shipped to that dealer who will then be credited with the sale of the frameset. This system allows the customer to select their exact paint specifications while also including the dealers who are an integral part of the quality assurance and customer satisfaction process.

AR1

Aero UHC Ultimate + Nano MMC carbon frame

Aero UHC Ultimate + Nano carbon fork

Aero carbon seatpost, InsideOut, threaded aluminum BB shell

matte carbon



AR

Aero Road UHC Advanced MMC carbon frame

Aero Road UHC Advanced carbon fork

Aero carbon seatpost, InsideOut, threaded aluminum BB shell

matte carbon



F1

Road UHC Ultimate + Nano DMC carbon frame
Road UHC Ultimate + Nano carbon fork
Carbon BB30 shell, ControlTaper, InsideOut



matte carbon

Z1

Road Superlight Custom Butted 7005 aluminum frame
Road UHC Advanced carbon fork
BB30, ControlTaper



matte carbon

FC

Road UHC Performance MMC carbon frame
Road UHC Advanced carbon fork
BB30, ControlTaper, InsideOut



matte carbon

ZW1

Fit Woman Road UHC Ultimate + Nano DMC carbon frame
Fit Woman Road UHC Ultimate + Nano carbon fork
Carbon BB30 shell, InsideOut



gloss carbon

FA

Road Superlight Custom Butted 7005 aluminum frame
Road UHC Advanced carbon fork
BB30, ControlTaper



matte black

DA1

Aero TT/Tri UHC Ultimate + Nano MMC carbon frame
Bayonet 3 UHC Ultimate + Nano MMC carbon fork
BB30, Bayonet 3 Steering System, Feli/TorHans aero water bottle



matte carbon

DAC

Aero TT/Tri UHC Advanced MMC carbon frame
 Bayonet 3 UHC Advanced MMC carbon fork
 BB30, Bayonet 3 Steering System, Felt/TorHans
 aero water bottle



matte carbon

FIX D

Cyclocross UHC Advanced MMC carbon frame w/ disc brake mounts
 3T 'cross-specific carbon fork w/ disc brake mounts
 BB30, InsideOut, Shoulder-Friendly top tube, ControlTaper



matte carbon

B12

Aero TT/Tri UHC Performance MMC carbon frame
 Aero TT/Tri UHC Performance MMC carbon fork
 Aero DA/B carbon seatpost w/ forward offset, InsideOut



gloss white

TK1 Endurance

Track UHC Ultimate + Nano Aero carbon frame
 Bayonet 2 Track UHC Ultimate + Nano carbon fork
 Aero TK1 carbon seatpost w/ 3T Topper



matte carbon

FIX C

Cyclocross UHC Advanced MMC carbon frame w/ canti brake pivots
 ENVE 'cross-specific carbon fork w/ canti brake pivots
 BB30, InsideOut, Shoulder-Friendly top tube, ControlTaper



matte carbon

TK1 Sprint

Track UHC Advanced Aero carbon frame
 Bayonet 2 Track UHC Ultimate + Nano carbon fork
 Aero TK1 carbon seatpost w/ 3T Topper



matte carbon

COMPULSION1

Compulsion UHC Performance carbon front triangle

6061 Superlite butted aluminum rear triangle

Equilink™, ControlTaper, Fox Float rear shock, 150mm/160mm adj. travel



gloss carbon

EDICTLTD

Edict UHC Ultimate + Nano DMC carbon front triangle

UHC Ultimate + Nano rear triangle

FAST™, InsideOut, ControlTaper, RockShox Monarch RT3 rear shock, 100mm travel, titanium hardware



matte carbon

VIRTUE LTD

Virtue UHC Ultimate + Nano DMC carbon front triangle

UHC Ultimate + Nano DMC carbon rear triangle

Equilink™, ControlTaper, Rockshox Monarch rear shock, 120mm/130mm adj. travel



gloss carbon

NINEFRD

Nine Series UHC Ultimate + Nano TeXtreme

InsideOut, ControlTaper



matte carbon

EDICT NINELTD

Edict Nine UHC Ultimate + Nano DMC carbon front triangle

UHC Ultimate + Nano rear triangle

FAST™, InsideOut, ControlTaper, Fox Float rear shock, 100mm travel, titanium hardware



gloss carbon

NINEC

Nine Series UHC Advanced MMC carbon frame

InsideOut, ControlTaper



gloss carbon



PARTS AND ACCESSORIES

While felt has produced high-quality parts and accessories for years, we recognized an opportunity to bring a higher level of engineering and quality to bike parts and accessories.

Whether it is a Wind-Tunnel Developed Bayonet 3 handlebar or a chrome plated handlebar for cruisers, Felt applies the same passion and attention to detail to every product that bears the Felt name. Each of these products was developed by the same team responsible for signature Felt products including the World Championship-winning DA TT/ Triathlon bike, the Bayonet™ steering system and the patented Equilink™ suspension.

The Bayonet 3 TT/Tri bar is a perfect example of the lengths Felt will go for superior product development. Our goal was simple: Create the best aero bar in the

world for time trialists and triathletes. It had to be strong, ultralight, completely adjustable and aerodynamically superior to anything else available. The end result is a flip-flop designed, monocoque carbon fiber base bar with near limitless adjustable extensions. It is wind tunnel developed, tested and proven. Nothing is faster or offers greater adjustability. And this is just one example. All Felt products receive this same level of detailed design attention.

Felt offers a multitude of components ranging from seatposts to cruiser accessories to water bottle cages. Each product represents hours of design and development. It is the engineering expertise, material selection and design testing that allows Felt to create parts that help you ride farther, faster and with greater control. It all adds up to a more enjoyable experience every time you ride.



TTR1 AERO TIRE

700x23c Clincher Tire
Aerodynamic Parabolic Shape
220 TPI Dual Compound Casing
170g



VA ALLOY ADJUSTABLE STEM

3D Forged 6061 Alloy Construction
Adjustable Shim Providing +/-5° and +/-15° of Rise
1-1/8" Steerer Bore
31.8mm Handlebar Clamp Diameter

DA/B AERO BOTTLE SYSTEM BY TORHANS™

Aerodynamically Optimized Shape
Specifically Designed for 2011+ DA and 2013+ B
Wind Tunnel Tested and Proven to Reduce Drag
Seamless Silicone, High Volume Flow, No Leak,
Spout Design



BAYONET CARBON TT/TRI HANDLEBAR

Ultra-Fast Wind Tunnel Developed Design
UHC+Nano Carbon Fiber Basebar & Extensions
Mutiple Position Adjustment Basebar
Three-Position Set-up Extensions



BAYONET CARBON/ ALLOY TT/TRI HANDLEBAR

Ultra-Fast Wind Tunnel Developed Design
UHC Carbon Fiber Basebar
7005 SuperLite Alloy Extensions
Mutiple Position Adjustment Basebar

BAYONET 2/3 SUPPORT PARTS

45 Spline Design Fits Bayonet 3, 2 and SL Steering Systems
Bayonet 1 or 2 top crown (45 spline)
Bayonet Stem Extensions in all available sizes:
26.0mm extension sizes: 40mm, 50mm, 65mm, 80mm, 95mm
31.8mm extension sizes: 40mm, 65mm, 80mm, 95mm
5mm secondary extension



BAYONET 3 FIXED POSITION STEM

Fixed Position
Compatible with Bayonet 3 System
31.8mm Handlebar Clamp Diameter

BAYONET ALLOY TT/TRI HANDLEBAR

Ultra-Fast Wind Tunnel Developed Design
7005 SuperLite Alloy Basebar & Extensions
Multiple Position Adjustment Basebar
Three-Position Set-up Extensions





Coming Soon

BAYONET 3 CARBON TT/TRI HANDLEBAR

Ultra-Fast Wind Tunnel Developed Design
7005 SuperLite Alloy Basebar & Extensions
Multiple Position Adjustment Basebar
Three-Position Set-up Extensions



BAYONET F-BEND ALLOY EXTENSIONS

22.2mm Diameter
7075series Aluminium
3 Position: F-Bend, Ski Bend(Cut To Fit),
or Straight(Cut To Fit)

BAYONET 3 ALLOY TT/TRI HANDLEBAR

Ultra-Fast Wind Tunnel Developed Design
Hydroformed Alloy Construction
Multiple Position Adjustment
Internal Cable Routing



Coming Soon

BAYONET BAR PAD WIDTH EXTENSIONS BY ZIPP®

Adjustable Width Armrest Pads
Fits All Bayonet Handlebars



Coming Soon

BAYONET 3 ALLOY BASEBAR

Ultra-Fast Wind Tunnel Developed Design
Hydroformed Alloy Construction
Multiple Position Adjustment
Internal Cable Routing

BAYONET F-BEND CARBON EXTENSIONS

22.2mm Diameter
Ultra Hybrid Carbon (UHC)
3 Position: F-Bend, Ski Bend (Cut To Fit),
or Straight (Cut To Fit)
225mm (Straight Section), 340mm (Total Length)
118g (Full Length)



BAYONET AEROBAR GEL REPLACEMENT PADS

Fits Bayonet Tri/TT Bar
Gel Padding for Increased Comfort
Dimpled Anti-Slip Texture
Velcro and Adhesive Backing



TRI/ TT AEROBAR GEL REPLACEMENT PADS

Fits B16 and S32 AeroBars
Gel Padding for Increased Comfort
Velcro and Adhesive Backing



TRI TIP GRIP BRAKE HOOD

Fits Bayonet Tri/TT Bar
Gel Padding for Increased Comfort
Dimpled Anti-Slip Texture
Velcro and Adhesive Backing



1-1/8" THREADLESS HEADSET

Sealed Stainless ACB Bearings
Includes Carbon Compression
device and Crown Race

GEL HANDLEBAR TAPE

Gel-Enhanced Tape
Embossed Felt Corp Logo
Includes Secure F-Wing Bar End Plugs



1-1/8" TO 1-1/2" TAPERED THREADLESS HEADSET

Sealed Stainless ACB Bearings
Includes Carbon Compression
device and Crown Race



GRIP GEL HANDLEBAR TAPE

Anti-Slip Texture
Shock Resistance Design
Gel-Enhanced Tape
Embossed Felt Corp Logo

F-WING CARBON TOP CAP

Carbon Fiber



1" THREADLESS HEADSET

Sealed Stainless ACB Bearings
Includes Carbon Compression device
and Crown Race

BAYONET III 19MM INTEGRATED HEADSET

Includes Integrated 19mm Sealed Bearings
Fits all 2011 -2013 DA-Series





F-WING BAR END PLUGS

Compatible with Nearly All Road & MTB Handlebars
Lightweight and Durable Design
Comes in Pairs



TK1 SEATPOST CLAMP

Stainless Steel Construction
2 piece Aero Design
Fits ALL TK1 Frames

TK1 ENDURANCE FORK KIT

Size Specific Bayonet Fork
Includes Bayonet Support Parts
Embossed Felt Corp Logo
Includes Headset



DOUBLE SEATPOST CLAMP (30.6)

CNC Alloy Construction
Titanium Bolt w/ Scandium Nut-Bar
30.6mm for 27.2mm Seatposts
Fits All Carbon Felt Non-Aero Road Frames



BAYONET 2 FORK KIT

Size Specific Bayonet Fork
Includes Headset
Includes Bayonet Support Parts



DA/B SEATPOST CLAMP BOLT W/ NUTBAR

DA/B Seatpost Clamp Bolt w/ Nutbar
Bolt and Nutbar for Integrated Aero Seatpost 0
Fits 2011 - 2013 DA-Series
Fits 2013 B-Series

ROAD FRAME PLUG KIT

Contains All Plugs for Running a Mechanical or Electrical Internal Cable System
2.5mm Di2 & EPS Internal Frame Plug (x2)
3mm Dura-Ace 10spd Di2 Internal Frame Plug (x2)
4mm Internal Frame Plug (x2)
5mm Internal Frame Plug (x2)



AERO SEATPOST CLAMPS

2-bolt alloy seatpost clamp
Torque rating is 5-7Nm (aprox 3-3/4 - 5-1/4 ft lbs)





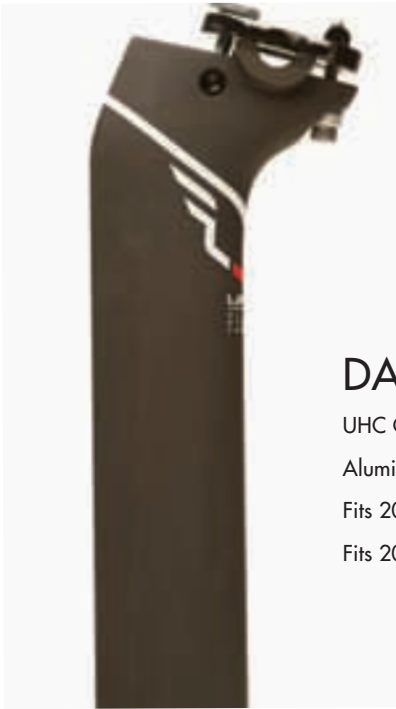
3.1 CARBON AERO SEATPOST

UHC Carbon Fiber Monocoque Aero Construction
 Aluminum Head with Micro-Adjust Saddle Clamp
 Fits Felt Aero Frames with Alloy Insert



1.1 CARBON AERO SEATPOST

UHC Carbon Fiber Monocoque Aero Construction
 Aluminum Head with Micro-Adjust Saddle Clamp
 Fits Felt Carbon Aero Frames



DA/B CARBON AERO SEATPOST

UHC Carbon Fiber Monocoque Aero Construction
 Aluminum Head with Micro-Adjust Saddle Clamp
 Fits 2011 - 2013 DA-Series
 Fits 2013 B-Series



TK1 CARBON AERO SEATPOST

UCI-legal Aero Design
 UHC Carbon Fiber Monocoque Aero Construction
 450mm



TK1 SEATPOST TOPPER BY 3T

Constructed with 6061series Aluminum
 DiffLock™ Clamping Mechanism Allows
 7mm saddle Rails
 Compatible with Felt TK1 Seatpost

3T OVAL RAIL SPLINE

Constructed with 6061series Aluminum
 DiffLock™ Clamping Mechanism Allows for
 Most Oval Saddle Rails
 Compatible with Felt TK1 Seatpost 3T Topper
 Fits 2013 B-Series



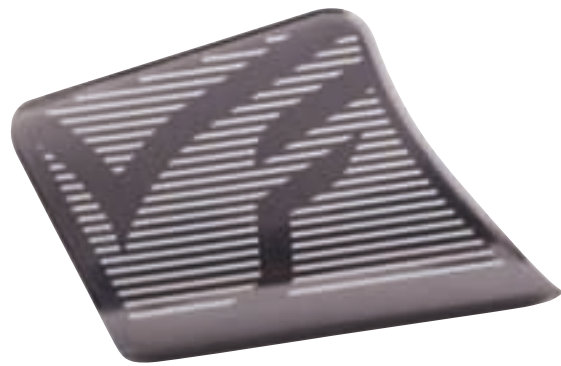
ROAD DERAILLEUR HANGER

OEM 2-Bolt Replacement Derailleur Hanger
 Fits ALL Felt Road Frames (Some Use Second Bolt)
 Fits ALL Felt Canti-Brake Cyclo-X Frames
 CNC-Machined 7075series Aluminum with
 Stainless Hardware

ROAD FRAME SMALL PARTS

All Cable Stoppers, Plugs, BB Guides for
 Running a Mechanical or Electric Cable
 System





ROAD FRAME PROTECTOR

Fits Drive Side Chainstay
Stainless Steel
Padded Adhesive Back



MTB FRAME PROTECTOR

Fits Underside of Downtube
Injection Molded
Padded Adhesive Back

AERO BATTERY COVER

Injection Molded Aerodynamic Di2 Battery Cover
DownTube Mounted
Includes Anodized 6061series Aluminum Mounting Bracket and Bolts
Fits 2011 - 2013 DA-Series
Fits 2013 B-Series



MTB LOCK-ON GRIPS

Lock-On Design
Extra-Soft & Sticky Durometer
Felt Lazer Logo
130mm Long with 30mm Outside Diameter



MTB HANGER

OEM Hanger
Fits ALL Felt MTB Frames (except RXC V-brake Frames)
Fits ALL Felt Alloy Disc Cyclo-X Frames
Fits Felt Cafe and X:City geared bikes
Fits ALL Felt Verza City 3



CARBON BOTTLE CAGE

UHC Carbon Fiber Construction
Secure and Easy Bottle Entry
Aluminum Head with Micro-Adjust Saddle Clamp
Fits 2011 - 2013 DA-Series
Fits 2013 B-Series



MTB SUSPENSION BEARING, HARDWARE & TOOL KITS

Includes Bearings, Hardware, Tools, and Instructions
Available for All Felt Suspension Bicycles

A man and a woman are shown from the chest up, wearing cycling jerseys. The man is in the foreground, seen from the back, wearing a black jersey with white and red graphics. The woman is in the background, slightly out of focus, wearing a black jersey with white and red graphics and pink sunglasses. The background is a blurred outdoor setting.

APPAREL

At Felt, we are known for developing high performance bicycles that look as good as they perform. Knowing that you expect that kind of quality, we aim to deliver apparel that meets those demands of form and function. Felt has partnered with industry-leading manufacturers to offer a full line of technical, performance cycling apparel. We offer jerseys, shorts, bibs, tri kits and more from Squadra and CCN and socks from DeFeet and Swiftwick. Felt also offers a wide selection of stylish casual apparel, as well as mechanic shirts for the team working in the shop. Fly your Felt colors with our latest gear offerings.



MEN'S RACE SHORT SLEEVE JERSEY

Super Soft 100% Polyester Quick Dry Fabric
Titanium Treatment
Full Length Hidden YKK Vision Front Zipper
Flatlock Stitching



MEN'S TRI TOP

Super High Ventilated Fabric
Reduces Heat build up and aids in moisture transfer
20cm YKK Vision Front Zipper
Flatlock Stitching

MEN'S RACE BIB SHORTS

Super High Modulus Stratos™ Spandex
Premier Endurance Conforma™ Chamois
Flatlock Stitching
PowerBand™ Compression Leg Closure



MEN'S TRI SHORTS

Super High Modulus Stratos™ Spandex
Premier Trifleece Chamois
Drawcord closure
Flatlock Stitching



WOMEN'S RACE SHORT SLEEVE JERSEY

Super Soft 100% Polyester Quick Dry Fabric
Titanium Treatment
Full Length Hidden YKK Vision Front Zipper
Flatlock Stitching

WOMEN'S RACE SHORTS

Super High Modulus Stratos™ Spandex
Premier Endurance Womens Conforma™ Chamois
Flatlock Stitching
PowerBand™ Compression Leg Closure



WOMEN'S TRI TOP

Super High Ventilated Fabric
Reduces Heat build up and aids in moisture transfer
20cm YKK Vision Front Zipper
Flatlock Stitching

WOMEN'S TRI SHORTS

Super High Modulus Stratos™ Spandex
Premier Womens Trifleece Chamois
Drawcord closure
Flatlock Stitching





MEN'S FACTORY SHORT SLEEVE JERSEY

100% Polyester Quick Dry Fabric
Full Length Front Zipper
Flatlock Stitching
Vented Side Panels
Club Cut



WOMEN'S FACTORY SHORT SLEEVE JERSEY

100% Polyester Quick Dry Fabric
Full Length Front Zipper
Flatlock Stitching
Vented Side Panels



WOMEN'S FACTORY SHORTS

82% Polyester; 18% Spandex
Imported Italian Chamois
Flatlock Stitching
Silicone Leg Grippers



MEN'S FACTORY BIB SHORTS

82% Polyester; 18% Spandex
Imported Italian Chamois
Flatlock Stitching
Silicone Leg Grippers



HIGH CUFF COMPRESSION SOCK

High-Performance Compression Socks
Designed to Maximize Performance
Ankle-Supporting 5" Compresive Cuff
Fast-drying, lightweight, and breathable

MEN'S FACTORY SHORTS

82% Polyester; 18% Spandex
Imported Italian Chamois
Flatlock Stitching
Silicone Leg Grippers



LOW CUFF CORP SOCKS

DeFeet Aireator Air Flow Design
1" Cuff



HIGH CUFF F-WING SOCKS

DeFeet Aireator Air Flow Design
5" Cuff



CORP LOGO TEE

Made of 100% pre-shrunk cotton
Tagless design for comfort



BMX SCRIPT TEE

Made of 100% Pre-Shrunk Cotton
Tagless Design for Comfort

SIGNATURE TEE

Made of 100% Pre-Shrunk Cotton
Tagless Design for Comfort



1t4i TEAM TEE

Made of 100% Pre-Shrunk Cotton
Tagless Design for Comfort



WOMEN'S SIGNATURE TEE

Made of 100% Pre-Shrunk Cotton
Tagless Design for Comfort



MECHANIC SHIRT

Made of 100% Polyester
Tagless design for comfort

FIXIE TEE

Made of 100% Pre-Shrunk Cotton
Tagless Design for Comfort



F-WING

Adjustable Normal Bill
Flexible Band Adapts to
Different Head Sizes



GEOMETRYCHART

ARSERIES					
Geometry	51	54	56	58	61
HA	72.5	73	73.5	73.5	74
SA	74.5	73.5	73.125	73	73
TT HORIZ	530	545	560	575	603
HT LENGTH	120	140	160	180	200
SEAT TUBE C-T	510	540	560	580	610
BB DROP	70	70	70	70	70
CS	412	412	415	415	415
WHEELBASE	980	983	989	1002	1025
STANDOVER	749	774	794	798	816
RAKE	45	45	43	43	43
STEM LENGTH	90	100	100	110	120
H-BAR WIDTH C-C	400	420	420	440	440
CRANK LENGTH	170	172.5	172.5	175	175

FSERIES						
Geometry	48	51	54	56	58	61
HA	71	72.5	73	73.5	74	74
SA	74.5	74	73.5	73.5	73.5	73
TT HORIZ	510	530	545	560	580	605
HT LENGTH	100	110	120	140	160	200
SEAT TUBE C-T	440	480	520	540	470	610
BB DROP	72	70	70	70	70	70
CS	403	403	405	405	407	410
WHEELBASE	969	971	974	983	1000	1022
STANDOVER	681	717	750	770	796	834
RAKE	52	50	45	43	43	43
STEM LENGTH	80	90	100	100	110	120
H-BAR WIDTH C-C	380	400	420	420	440	440
CRANK LENGTH	165	170	172.5	172.5	175	175

ZSERIES					
Geometry	51	54	56	58	61
HA	72	72.5	72.5	72.5	72.5
SA	74.5	74	73.5	73	73
TT HORIZ	525	545	560	575	595
HT LENGTH	140	160	180	200	220
SEAT TUBE C-T	470	500	520	540	570
BB DROP	70	70	70	70	70
CS	417	417	417	417	417
WHEELBASE	990	1002	1012	122	1042
STANDOVER	698	727	747	767	795
RAKE	50	50	50	50	50
STEM LENGTH	80	90	100	110	110
H-BAR WIDTH C-C	400	420	420	440	440
CRANK LENGTH	170	172.5	172.5	175	175

ZWSERIES				
Geometry	Petite	Small	Medium	Tall
HA	70.25	71.25	72	72.5
SA	75.25	74.5	74.5	74
TT HORIZ	495	512	525	545
HT LENGTH	120	130	140	160
SEAT TUBE C-T	430	450	470	500
BB DROP	72	72	70	70
CS	410	410	417	417
WHEELBASE	974	977	990	1002
STANDOVER	-	-	-	-
RAKE	52	52	50	50
STEM LENGTH	60	70	80	90
H-BAR WIDTH C-C	380	380	380	400
CRANK LENGTH	165	165	170	172.5

TT/TRISERIES					
Geometry	47(650c)	51	54	56	58
HA	71	72.5	73	73	73
SA	76.5-78.8	76-78.1	76-78	76-78	76-78
TT HORIZ	471-490	500-520	521-540	541-560	561-580
HT LENGTH	78	80	88	108	128
SEAT TUBE C-T	470	510	540	560	580
BB DROP	45	70	70	70	70
CS	375	395	395	395	395
WHEELBASE	935	962	978	999	1020
STANDOVER	724	770	794	813	833
RAKE	40	40	40	40	40
STEM LENGTH	30x70	30x70	30x70	60x100	60x100
H-BAR WIDTH C-C	390	390	390	420	420
CRANK LENGTH	165	170	172.5	175	175

TRACKSERIES					
Geometry	51	54	56	58	61
HA	74	75	75	75	75
SA	74	74	74	74	74
TT HORIZ	515	540	560	580	607
HT LENGTH	110	120	140	160	195
SEAT TUBE C-T	510	540	560	580	610
BB DROP	55	55	55	55	55
CS	395	395	395	395	395
WHEELBASE	935	938	958	978	1004
STANDOVER	-	-	-	-	-
RAKE	43	30	30	30	30
STEM LENGTH	60	60	70	70	80
H-BAR WIDTH C-C	40	40	40	40	40
CRANK LENGTH	165	165	167.5	170	170

CROSSERIES						
Geometry	47	50	53	55	57	60
HA	71	71.5	72	72	72	72
SA	75	74.5	73.5	73.8	73	73
TT HORIZ	510	525	540	560	580	605
HT LENGTH	110	120	130	150	170	195
SEAT TUBE C-T	470	500	530	550	570	600
BB DROP	65	65	65	65	65	65
CS	430	430	430	430	430	430
WHEELBASE	1005	1005	1007	1027	1042	1068
STANDOVER	726	751	779	796	814	834
RAKE	50	45	45	45	45	45
STEM LENGTH	80	9 0	100	100	110	120
H-BAR WIDTH C-C	380	400	420	440	440	440
CRANK LENGTH	165	170	172.5	175	175	175

EDICT NINESERIES				
Geometry	Small	Medium	Large	XL
HA	71.5	71.5	71.5	71.5
SA	73	73	73	73
TT HORIZ	578	603	628	650
HT LENGTH	100	110	120	140
SEAT TUBE C-T	15.5	18	20	22.5
BB DROP	42	42	42	42
CS	450	450	450	450
WHEELBASE	1078	1103	1128	1150
STANDOVER	-	-	-	-
RAKE	46	46	46	46
STEM LENGTH	90	90	100	110
H-BAR WIDTH C-C	680	680	710	710
CRANK LENGTH	170	175	175	175

VIRTUESERIES				
Geometry	Small	Medium	Large	XL
HA	69	69	69	69
SA	73.5	73.5	73.5	73.5
TT HORIZ	551	576	600	625
HT LENGTH	110	120	135	150
SEAT TUBE C-T	411	445	495	545
BB DROP	-10	-10	-10	-10
CS	425	425	425	425
WHEELBASE	1075	1101	1125	1151
STANDOVER	693	703	747	788
RAKE	39	39	39	39
STEM LENGTH	70	80	90	100
H-BAR WIDTH C-C	680	680	710	710
CRANK LENGTH	170	175	175	175

COMPULSIONSERIES				
Geometry	Small	Medium	Large	XL
HA	67.5	67.5	67.5	67.5
SA	73.5	73.5	73.5	73.5
TT HORIZ	580	604	627	652
HT LENGTH	115	125	135	145
SEAT TUBE C-T	410	440	490	540
BB DROP	-15	-15	-15	-15
CS	432	432	432	432
WHEELBASE	1128	1154	1178	1204
STANDOVER	724	738	767	793
RAKE	40	40	40	40
STEM LENGTH	60	70	70	80
H-BAR WIDTH C-C	680	680	720	720
CRANK LENGTH	170	175	175	175

NINESERIES					
Geometry	14	16	18	20	22
HA	71	71.5	71.5	71.5	71.5
SA	73.5	73	73	73	73
TT HORIZ	560	585	605	625	645
HT LENGTH	90	90	100	110	120
SEAT TUBE C-T	356	406	457	508	559
BB DROP	65	65	65	65	65
CS	440	440	440	440	440
WHEELBASE	1049	1064	1084	1104	1127
STANDOVER	-	-	-	-	-
RAKE	51	46	46	46	46
STEM LENGTH	80	90	100	110	110
H-BAR WIDTH C-C	680	680	680	710	710
CRANK LENGTH	170	175	175	175	175

SIXSERIES					
Geometry	13.5	15.5	17.5	19.5	21.5
HA	68.5	69	69	69.5	69.5
SA	73.5	73	73	73	73
TT HORIZ	530	560	590	615	635
HT LENGTH	120	130	140	150	170
SEAT TUBE C-T	343	394	445	495	546
BB DROP	35	35	35	35	35
CS	425	425	425	425	425
WHEELBASE	1035	1056	1086	1106	1127
STANDOVER	672	708	742	768	804
RAKE	39	39	39	39	39
STEM LENGTH	80	90	100	110	110
H-BAR WIDTH C-C	640	680	680	680	680
CRANK LENGTH	170	175	175	175	175

QSERIES		
Geometry	24	
HA	69	
SA	70	
TT HORIZ	525	
HT LENGTH	110	
SEAT TUBE C-T	285	
BB DROP	23	
CS	410	
WHEELBASE	968	
STANDOVER	580	
RAKE	30	
STEM LENGTH	60	
H-BAR WIDTH C-C	560	
CRANK LENGTH	152	

Copyright 2012-13 Felt Racing, LLC and Felt GmbH. All rights reserved. No portion of this may be reproduced, whole or in part, without the express written consent of Felt Racing, LLC and Felt GmbH. Specifications subject to change without notice. Not responsible for typos or misprints. Some of the action depicted here is of professional riders and should not be attempted. Know your limitations and always ride safely and in complete control. Obey all traffic, safety and land access laws and always wear a helmet. CPSC equipment included with all new bicycles but not necessarily shown here. feltbicycles.com



