

FR SERIES TECHNICAL MANUAL



» INTRODUCTION

FR SERIES

Congratulations on purchasing a FR Series. As with all of our bikes and components, our aim is to provide the rider with the best product and riding experience. Read this manual supplement thoroughly, as it is designed to help you set your bike up correctly, and care for it.

For further information, visit:
FELTBICYCLES.COM

» CONTENTS

INTRODUCTION

Geometry 2

SETUP

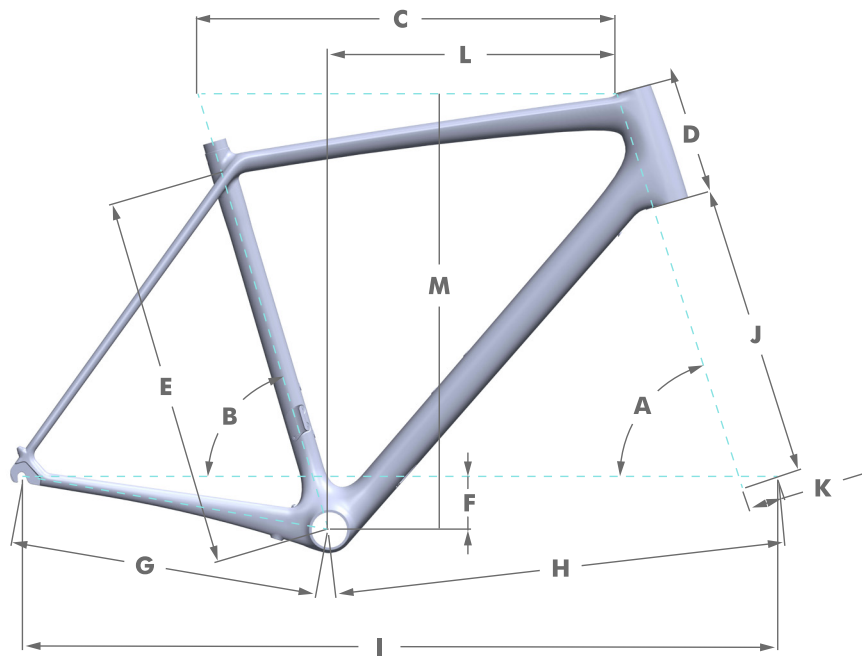
Head Tube Cable Guides..... 3
Front Brake Cable/Hose Routing..... 4
Cable Liner Installation Guide 5
Cable Routing Requirements..... 6
Cable Routing Grommet Guide 7-8

CONTACT INFORMATION

Contact..... 9



» GEOMETRY



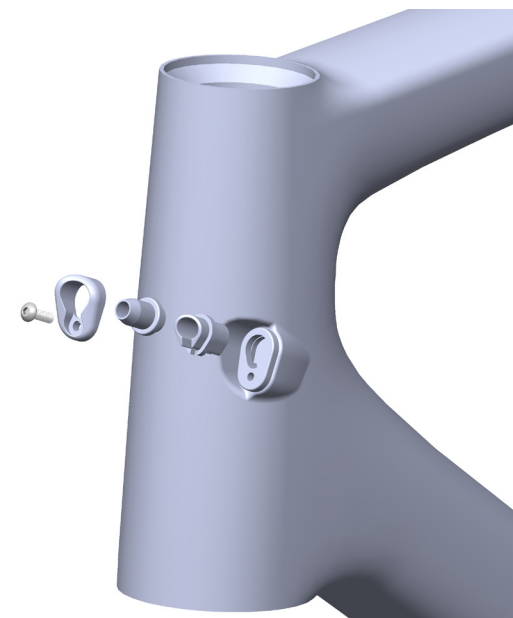
	43	47	51	54	56	58	61	Size
A	70.5	71.5	72.5	73	73.5	73.75	74	Head Tube Angle
B	75.25	74.5	74	73.5	73.5	73.25	73	Seat Tube Angle
C	495	512	530	548	563	583	604	Top Tube Horizontal
D	90	100	115	135	155	177	205	Head Tube
E	405	425	465	505	525	555	595	Seat Tube
F	72	72	72	70	70	70	70	BB Drop
G	403	403	403	405	405	407	410	Chain stay
H	573	575	577	585	591	606	621	Front Center
I	965	967	710	747	767	790	828	Wheelbase
J	380	380	380	380	380	380	380	Fork Length
K	52	52	47	47	43	43	43	Fork Offset
L	362	369	377	385	394	405	414	Reach
M	499	512	530	550	572	594	621	Stack

» HEAD TUBE CABLE GUIDES

The head tube cable guides contain rubber reducers for all cable sizes that are interchangeable and can be arranged to fit each rider's setup and personal preferences.

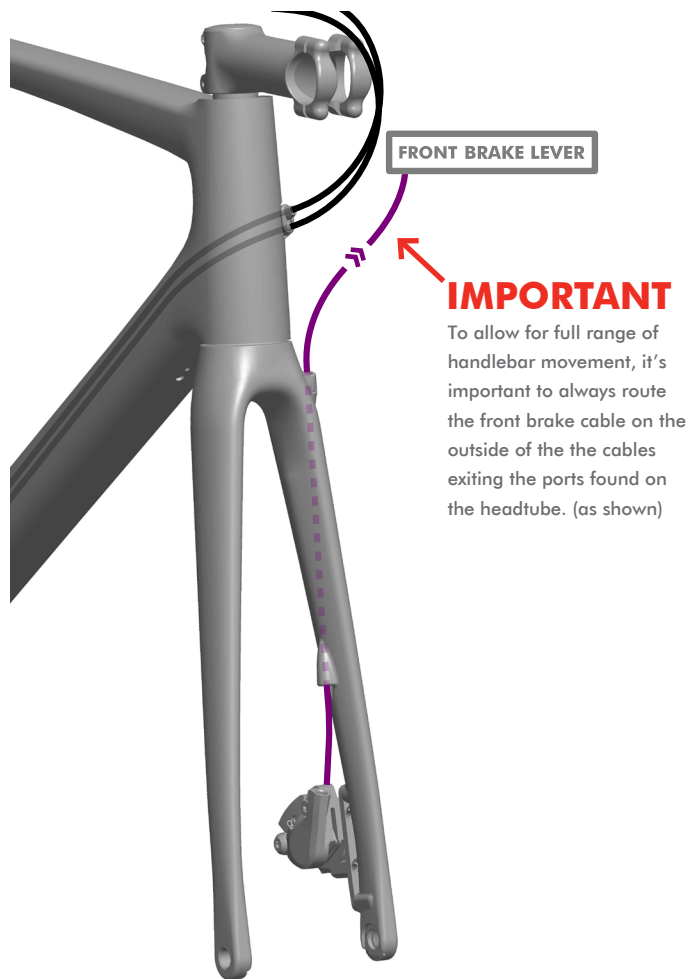


Brake (5mm)



» ROUTING FRONT BRAKE

It is best to route the cable from the bottom up. Begin by inserting the end of the cable into the lower hole, feeding the cable through the fork blade toward the upper hole.



» ROUTING CABLE LINER INSTALLATION GUIDE

1



Start by locating the port found on the driveside junction between the seat and the chain stay. Thread the cable liner through the port until it exits the port found on the bottom bracket.

2

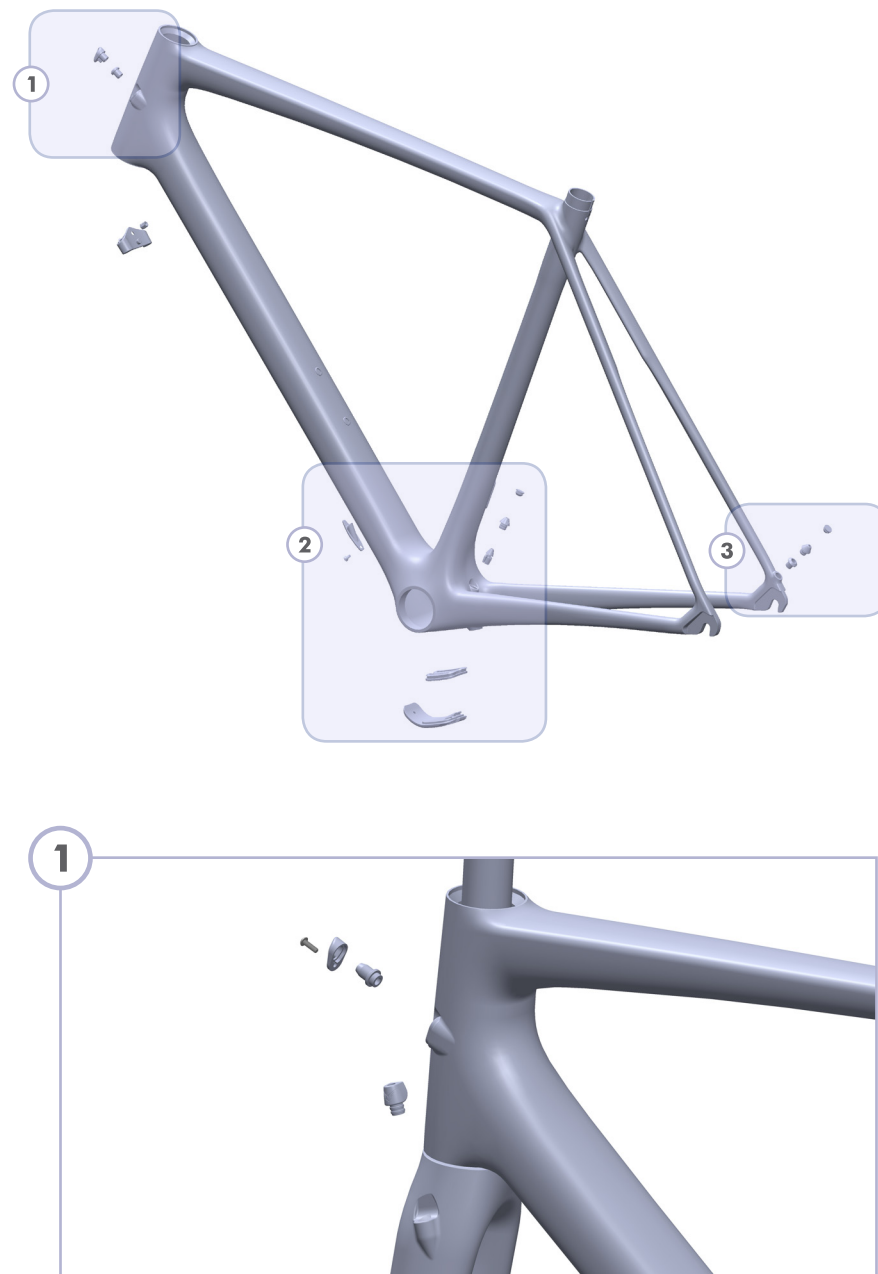


Once the cable liner has been properly threaded through the chain stay, you can now route the derailleur cable through the liner using a typical cable installation procedure.

» ROUTING ROUTING GUIDE

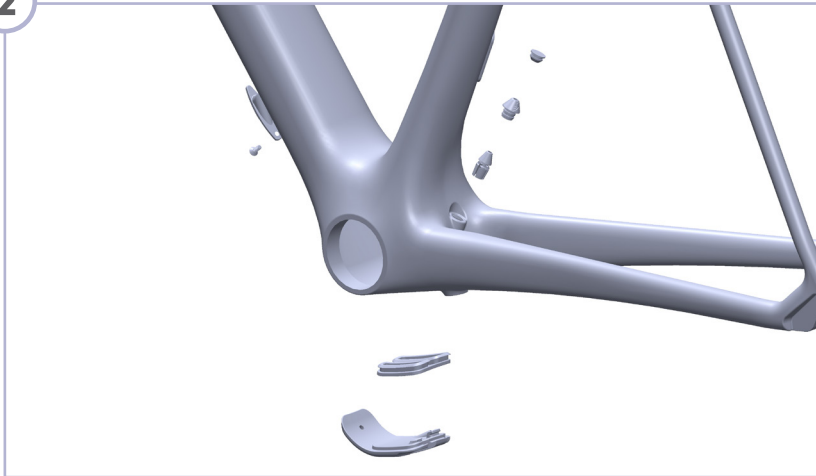


» GROMMET MAP

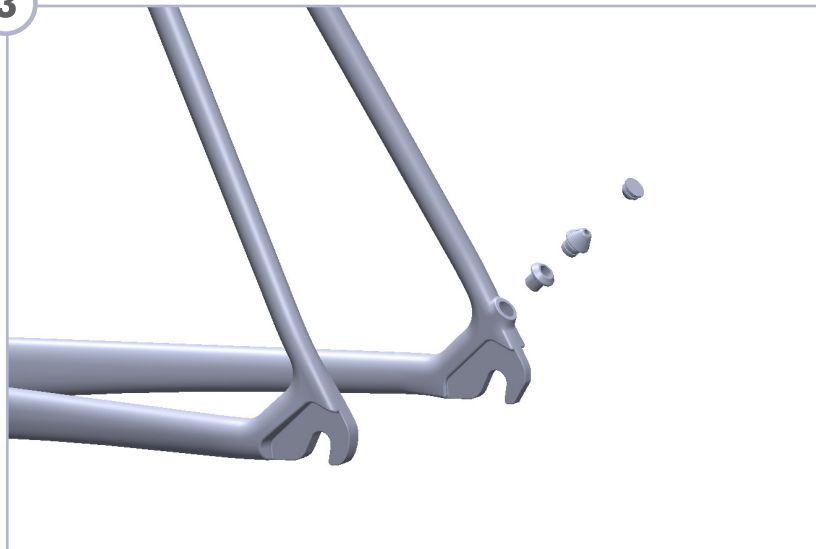


» GROMMET MAP ^{CONT.}

2



3



» CONTACT INFORMATION

Felt Racing, LLC
12 Chrysler
Irvine, CA 92618
USA

Felt GmbH
Industriestr. 39
26188 Edewecht
Germany

WWW.FELTBICYCLES.COM

