

BAYONET 4 TECHNICAL MANUAL



» INTRODUCTION

Congratulations on purchasing a Felt Bayonet 4 equipped road bike. As with all of our bikes and components, our aim is to provide the rider with the best product and riding experience. Read this manual supplement thoroughly, as it's to help you set your bike up correctly, and care for it.

For further information, visit:
FELTBICYCLES.COM

» CONTENTS

BAYONET FORK ASSEMBLY

Exploded View / Parts List	2
Bayonet System Assembly	4
DI2 Cable Routing	12
Mechanical Cable Routing	15

BRAKE MAINTENANCE & INFORMATION

Exploded View / Parts List	16
Torque Value Map.....	18
Disassembly.....	19
Cleaners / Lubricant Information	23
Assembly	24

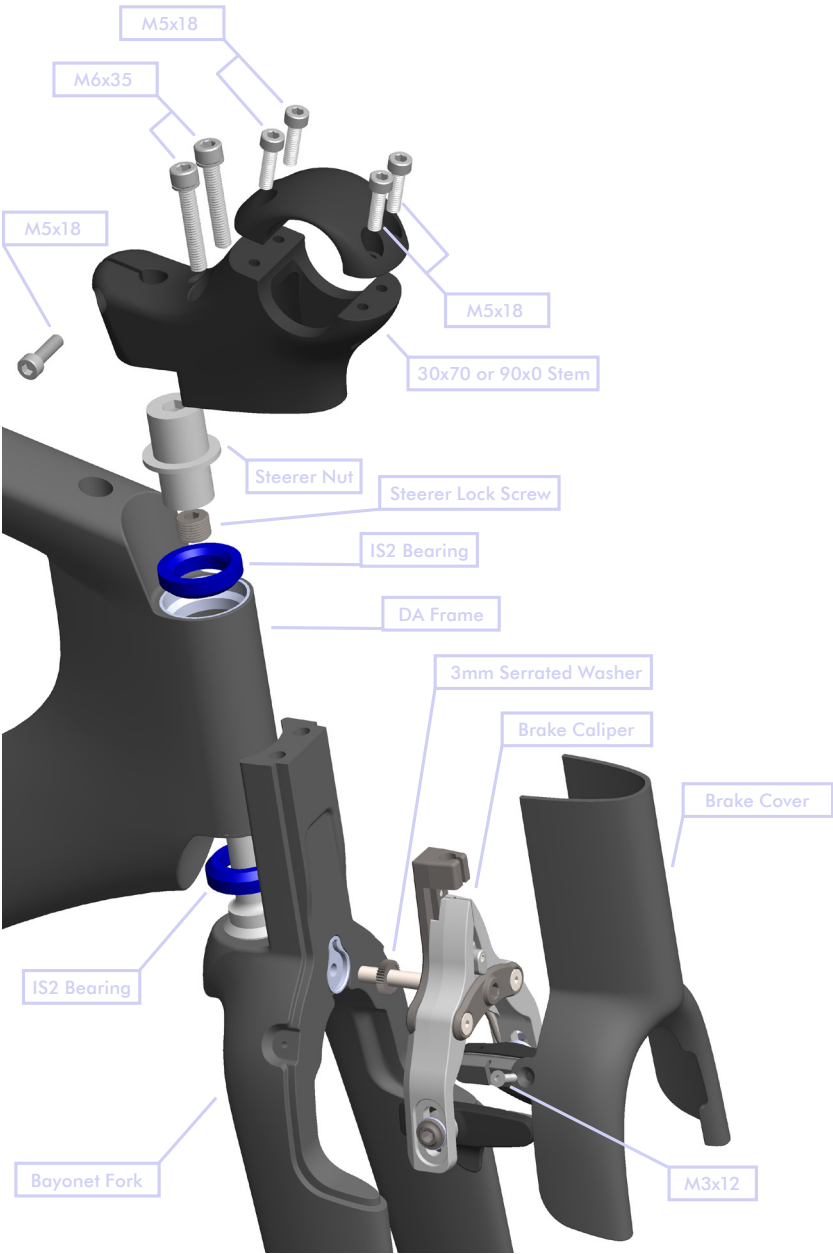
CONTACT INFORMATION

Contact.....	28
--------------	----

NOTE:
This manual is not intended as a comprehensive use, service, repair, or maintenance manual. Please see your dealer for all service, maintenance, and repair. Your dealer may also be able to refer you to classes, clinics, or books regarding bicycle use, service, repair, or maintenance.



» EXPLODED VIEW



» PARTS LIST

description	qty.
M5 x 18	5
M6 x 35	2
M3 x 12	2
30 x 70 or 90 x 0 Stem	1
Steerer Nut	1
Steerer Lock Screw	1
IS2 Bearing	2
DA Frame	1
3mm Serrated Washer	1
Brake Caliper	1
Brake Cover	1
Bayonet Fork	1

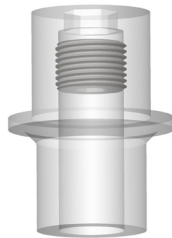
» FORK ASSEMBLY

1



Start by assembling the steerer nut & the steerer lock screw. Be sure to use an anti-seize compound on the aluminum threads to prevent seizing and gapping.

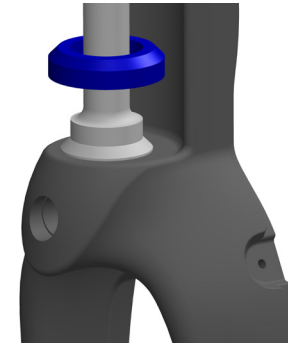
2



Using a 6mm allen key, thread the steerer lock screw into the shaft nut in until it hits the top of the shaft nut. Do not tighten the steerer lock screw down. You are simply moving it out of the way for later installation.

» FORK ASSEMBLY

3



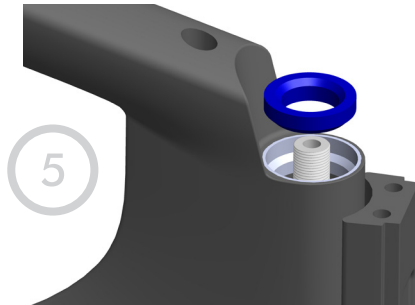
Apply grease or an anti-seize compound to bearing race located on the fork. Then proceed to slide the lower headset bearing into place on the steerer tube.

4

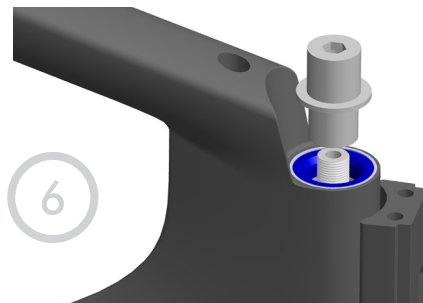


Guide the steerer tube through the head tube of the frame until the bearing seats into the bearing race in the frame.

» FORK ASSEMBLY

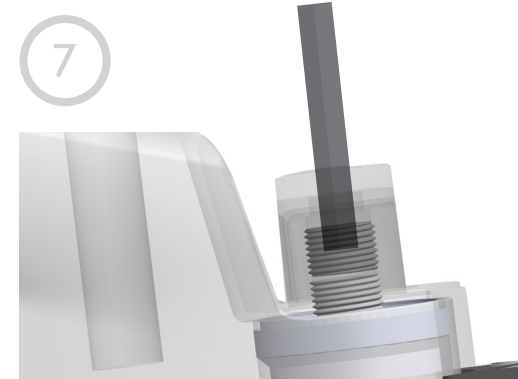


Apply grease or an anti-seize compound to the upper bearing race of the frame and slide the upper headset bearing down the steerer tube until it is firmly seated in the bearing race in the frame.

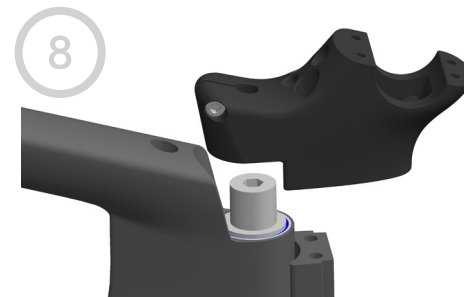


Apply grease or an anti-seize compound to the bearing race found on the steerer shaft nut and the threads on the steerer tube. Then proceed to thread the steerer shaft nut onto the steerer tube. Use 8mm Allen Key to tension the headset like you would on a standard threadless headset. Do not over tighten.

» FORK ASSEMBLY

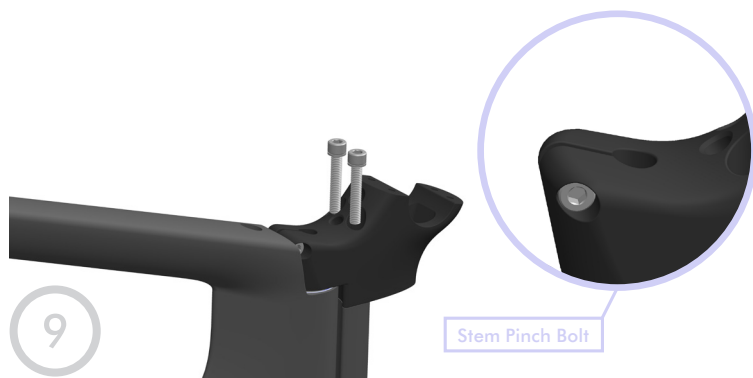


Insert a 6mm allen key through the opening found in the steerer nut and into the steerer lock screw. Turn the steerer lock screw clockwise until it contacts the steerer shaft. The steerer lock screw locks the headset adjustment. Tighten this to 5Nm with a torque wrench.

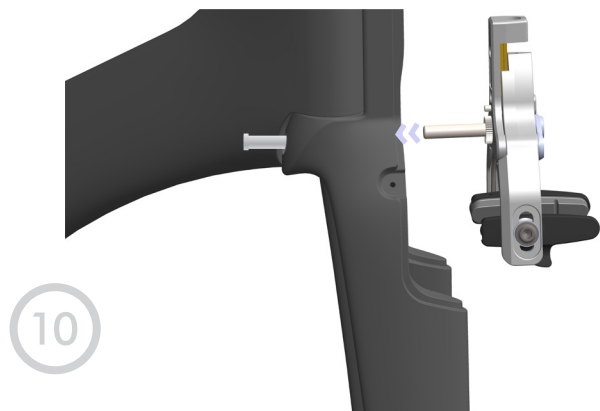


Install the Bayonet stem by placing it over the steerer shaft nut.

» FORK ASSEMBLY

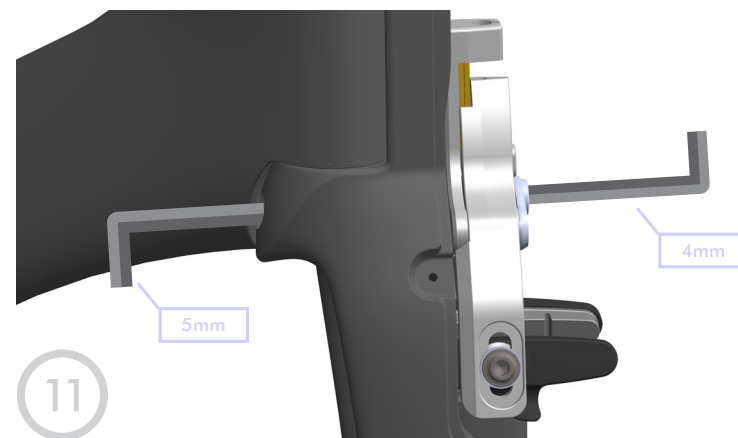


Insert the M6x40mm bolts through each hole in the stem. Thread each bolt into the holes in the bayonet fork. If the threads don't engage, shift the stem until correctly aligned. Tighten the two bolts to 12Nm then tighten the pinch bolt to 5 Nm.



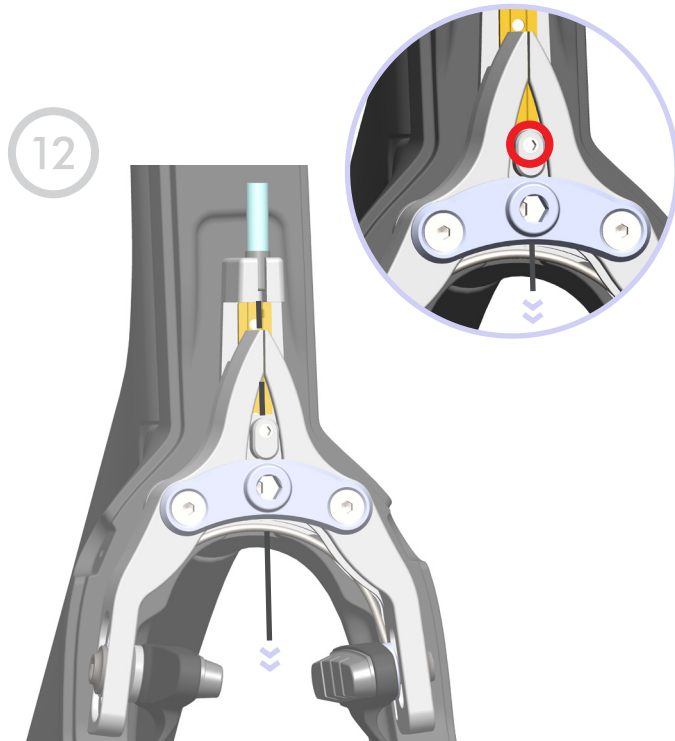
Fasten the Front Brake to the fork using the Brake Mounting Bolt and the 30mm Brake Mounting Nut and Serrated Nut as shown.

» FORK ASSEMBLY



Using a 4mm and 5mm Hex Wrench, tighten the Brake Mounting Nut and Bolt to 6Nm.

» FORK ASSEMBLY



Thread the Front Brake Cable through the Front Brake Cable Housing, through the Barrel Adjuster and into the Front Brake as shown.

Apply tension on the front brake cable and tighten the Cable Clamping Screw as shown. The amount of tension placed on the cable will vary depending on the width of the rim.

» FORK ASSEMBLY



Place cover on and secure with M3 bolts. Tighten each bolt to 2Nm.

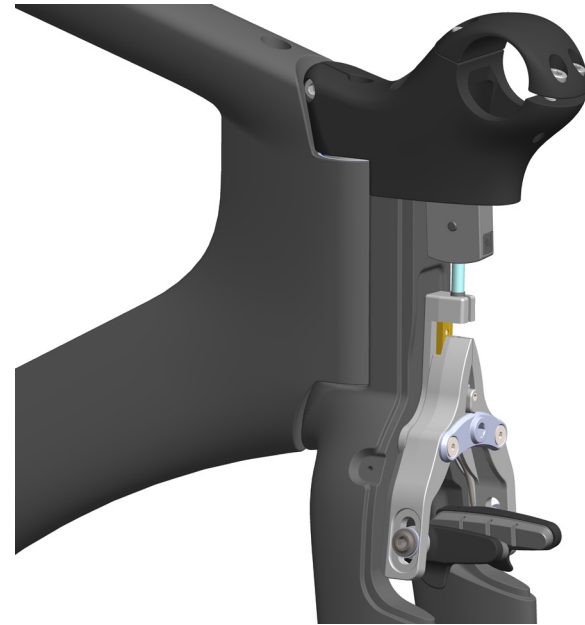
***If using Di2, refer to pages 12-14 for cable routing prior to installing the cover.

» DI2 ROUTING



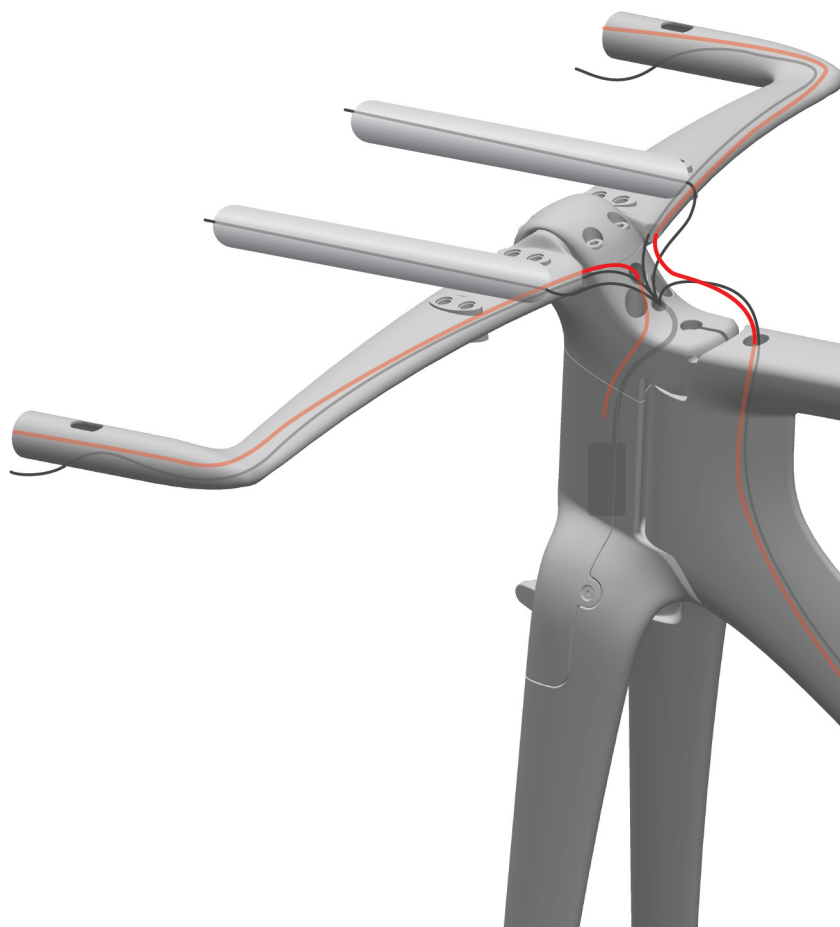
Once the Di2 wires are plugged into the junction box, begin to organize the wires and box to create a package that will fit underneath the cover.

» DI2 ROUTING



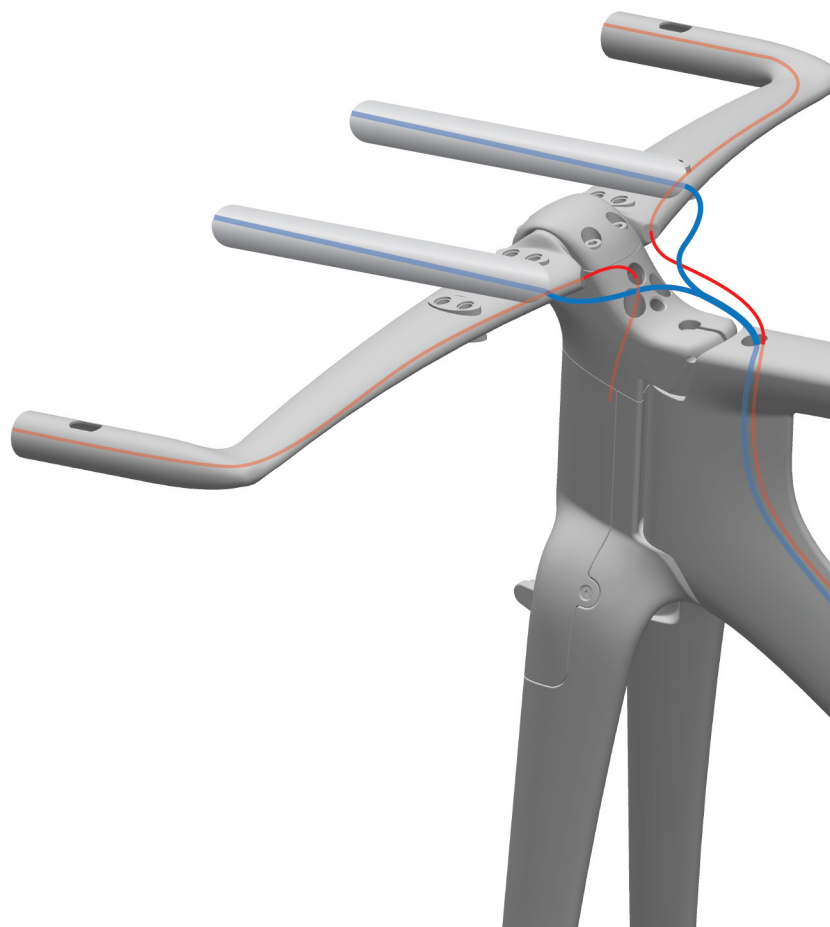
Once connected and organized, the box and wires can be neatly tucked up into the stem. A zip-tie can be to bundle the excess Di2 wires, along with securing the box and cable to the brake cable. This will keep internals from moving around after the cover has been installed.

» DI2 ROUTING



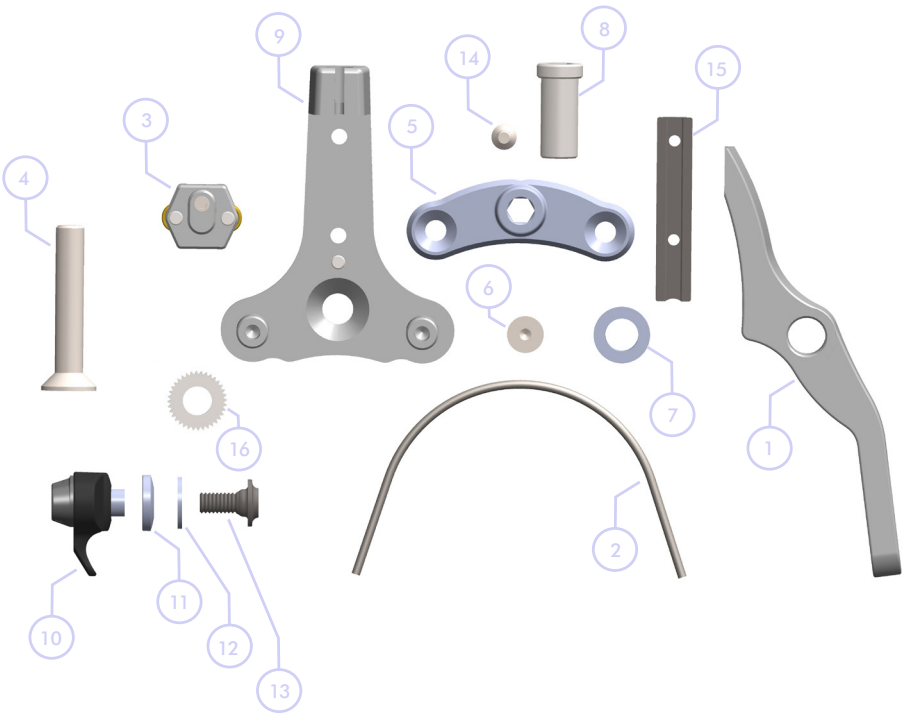
- DI2 WIRE
- BRAKE CABLE

» CABLE ROUTING MECHANICAL



- SHIFTER CABLE
- BRAKE CABLE

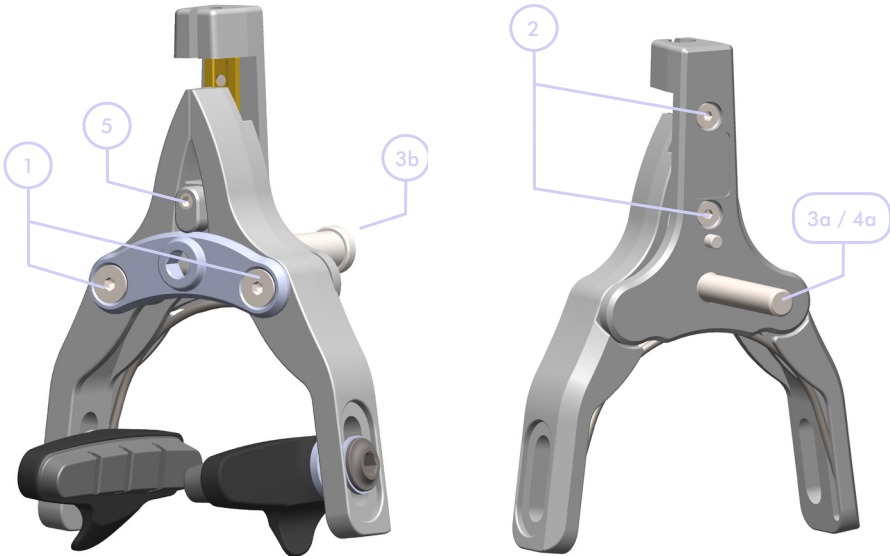
» EXPLODED VIEW



» PARTS LIST

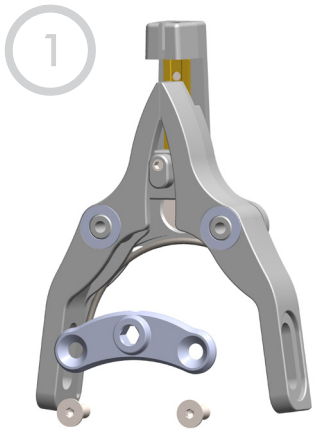
item no.	description	qty.
1	Brake Arm (R & L)	2
2	Return Spring	1
3	Carriage Assembly	1
4	Brake Mounting Bolt	1
5	Front Plate	1
6	Front Plate Mounting Screws	2
7	Brake Arm IGUS® Pivot Bushing	4
8	30mm Brake Mounting Screw	1
9	Backing Plate	1
10	Brake Pad & Pad Holder	2
11	Brake Pad Spherical Washer	2
12	Brake Shoe Fixing Washer	2
13	Brake Shoe Fixing Screw	2
14	Track Mounting Screw	2
15	Track	1
16	Serrated Washer	1

» TORQUE VALUES

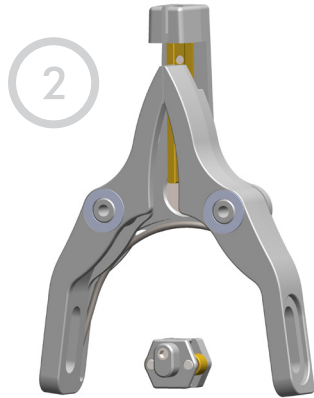


item no.	description	thread	allen key size	rec. torque
1	Front Plate Mounting Screw	M4 x 0.7	3mm	2Nm
2	Track Mounting Screw	M3 x 0.5	2mm	1Nm
3a	Front Brake Mounting Screw	M6 x 1.0	4mm	6-8Nm
3b	Front Brake Mounting nut	M6 x 1.0	5mm	6-8Nm
4a	Rear Brake Mounting Screw	M6 x 1.0	4mm	6-8Nm
5	Cable Clamping Screw	M4 x 0.7	2mm	1Nm

» BRAKE DISASSEMBLY

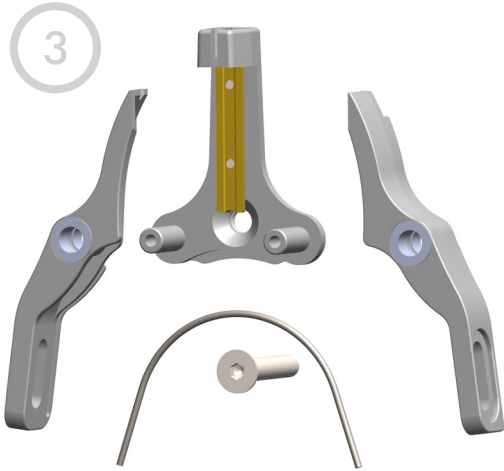


Remove Front Plate and Mounting Screws.

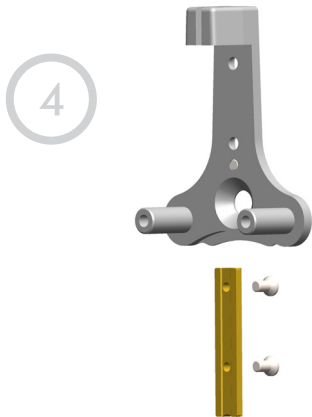


Remove Carriage Assembly.

» BRAKE DISASSEMBLY



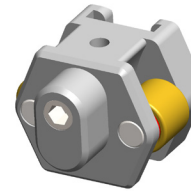
Remove Brake Arms, Mounting Bolt and Spring.



Remove Track from Backing Plate.

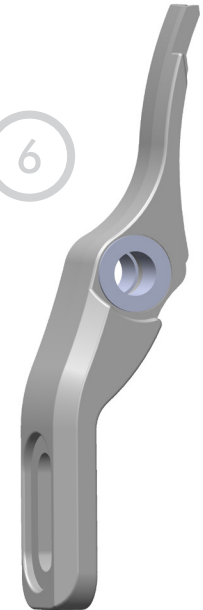
» BRAKE DISASSEMBLY

5



Clean and Inspect Brake Carriage Assembly Rollers and T-Slot.

6

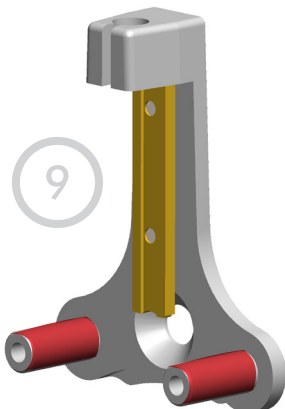


Clean and Inspect Brake Arm Bushings.

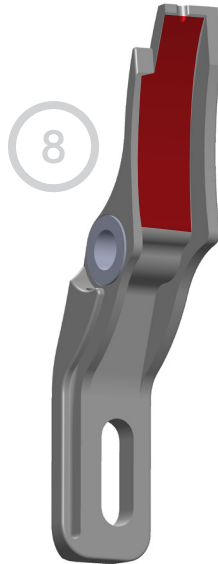
» BRAKE DISASSEMBLY



Clean and Inspect Spring.



Clean Brake Arm Pivots.



Clean and Inspect Brake Arm Cam Surfaces and Spring Pocket.

» LUBRICANT & CLEANER INFORMATION

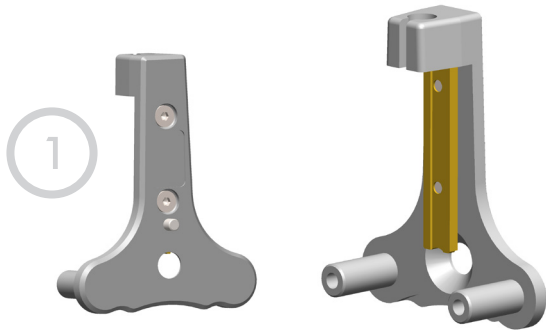
Cleaners: The Brake Pivots and Cam Follower Rollers incorporate IGUS® lubrication-free polymer bushings, which DO NOT require any form of lubricant to function properly. It should be noted that if these bushings are exposed to harsh chemical cleaners, aerosol cleaners, solvents, or lubricants, they may experience a chemical reaction causing the bushings to swell up and bind and/or eventually break down. (Notes: WD-40 is particularly harmful to these bushings.)

Petroleum-based products are okay to use. Typically, aerosol cleaners are not acceptable.)

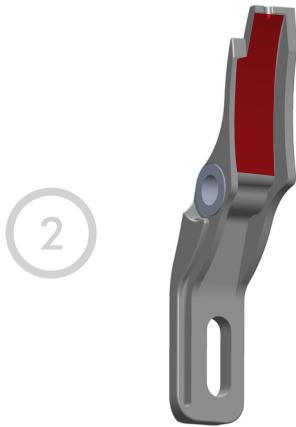
It is recommended that the brake be cleaned with a mild degreaser or soap and water.

Lubricants: As previously noted, the Brake Pivots and Cam Follower Roller Bushings are lubricant-free, and DO NOT require any form of lubricant to function properly. A Light Waterproof Grease may be applied to the Brake Arm Cam Track and to the Carriage Track if desired.

» BRAKE ASSEMBLY



Remount Track and apply film of light, waterproof grease. Tighten bolts to 1Nm.



Apply a thin film of light waterproof grease to Brake Arm Cam surfaces.

» BRAKE ASSEMBLY



Apply thin film of light waterproof grease to spring arms.



Preassemble Brake Arms and Spring.

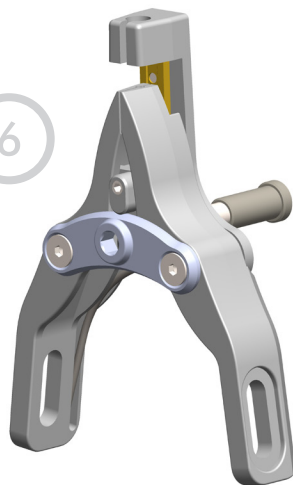
» BRAKE ASSEMBLY

5



Add Bushings to Brake Arms. Slip Brake Arm and Spring Pre assembly onto Brake Posts. Add Brake Mount Bolt.

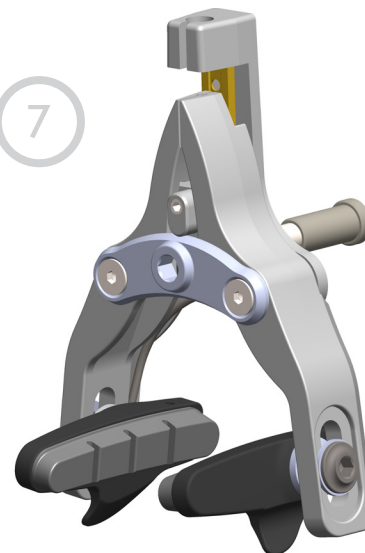
6



Install Carriage Assembly followed by installing the Front Plate and tighten screws to 2Nm.

» BRAKE ASSEMBLY

7



The brake pads can now be installed finishing the brake assembly. The brake is now ready to be re-installed on the fork.

» CONTACT INFORMATION

Felt Racing, LLC
12 Chrysler
Irvine, CA 92618
USA

Felt GmbH
Industriestr. 39
26188 Edewecht
Germany

WWW.FELTBICYCLES.COM
INFO@FELTBICYCLES.COM

